

Kalmar DCF50-90

# The premium choice

---

Light range 5-9 t.

---



# When only the best is good enough

“  
ARE YOU A  
KALMAR  
CUSTOMER?”

Since 1949, Kalmar has been the preferred brand among quality-aware forklift truck drivers and owners. The trucks are renowned and appreciated for their outstanding efficiency, safety, reliability – and not least flexibility.

A Kalmar DCF50–90 is the most exclusive choice of forklift truck in the 5–9 ton range, designed for the most quality-aware customers. Being a premium choice, it is only natural that you can have your forklift truck designed exactly as you want it.

The DCF50–90 lets operators excel at work and get the job done quickly and accurately – while enjoying the comfort of a spacious and ergonomic cabin.

It helps ambitious sustainability managers to improve beyond emission targets thanks to its environmentally superior motor design and filtering capabilities.

It allows plant owners to see its outstanding productivity, robustness and service friendliness reflected on the bottom line.

Regardless of requirement or perspective, the Kalmar DCF50–90 is the truck that counts when only the very best is good enough.



# Not just another forklift truck



A Kalmar DCF50–90 is a vital, integral part of your production process that can boost your productivity – just like an industrial robot or automation system. You can depend on its uncompromising quality to ensure reliable operation year after year.

A Kalmar forklift truck can improve the efficiency of any modern production system, offering flexible and reliable material handling in both long and short series production. It will keep your operations running smoothly day in day out.

The DCF50–90 comes with many smart features that optimise reliability and productivity. Drivers can make full

use of their skills due to the powerful engine and sophisticated ergonomics in the cabin. Inspection and service is fast thanks to easily accessible inspection points. Environmental care has been built into every aspect of the truck's design.

Kalmar trucks are built to the highest standards of quality and reliability, offering you the best possible operating economy and longest service life available in the market.

# Packed with smart features

The DCF50–90 comes packed with smart features that will boost your productivity and reduce the environmental impact.

The cooling system's airflow has been updated with a pulling fan, which keeps the engine room cooler. Vibration and noise levels are lower than ever before. The heavy-duty hydraulic system is designed to cope with the toughest driving and environmental conditions. The new engine with SCR system (selective catalytic reduction) reduces emissions.

**Just to name a few.**



The best driver environment on the market is now even better and is fully adapted to today's requirements. Five different cabin concepts mean that you can choose the one that best meets your needs.

The well proven, Kalmar developed, KCS (Kalmar control system) is based on fast, robust CAN-bus technology. There are plenty of options and possibilities for customising your truck's functions.

Superb visibility in all directions.

The temperature controlled hydrostatically driven fan operates only when needed. A new pulling fan keeps the engine room and cabin even cooler than before.

Highly reliable and environmentally friendly diesel engine that meets the latest emission requirements (Stage IIIB/Tier 4i).

All service points can be reached from a standing position next to the truck. The first 50-hour service has been replaced by a 500-hour service.

The cabin can be tilted to provide easy access to the entire driveline.

The lifting equipment has a robust design and enables good visibility. Choose between a wide range of masts, forks and attachments for different applications.

Choose either the precision of the hydrostatic drive or a robust and reliable gearbox.

Options include intelligent functions that increase productivity even further, including pre-selection of the lifting height and automatic vertical orientation.

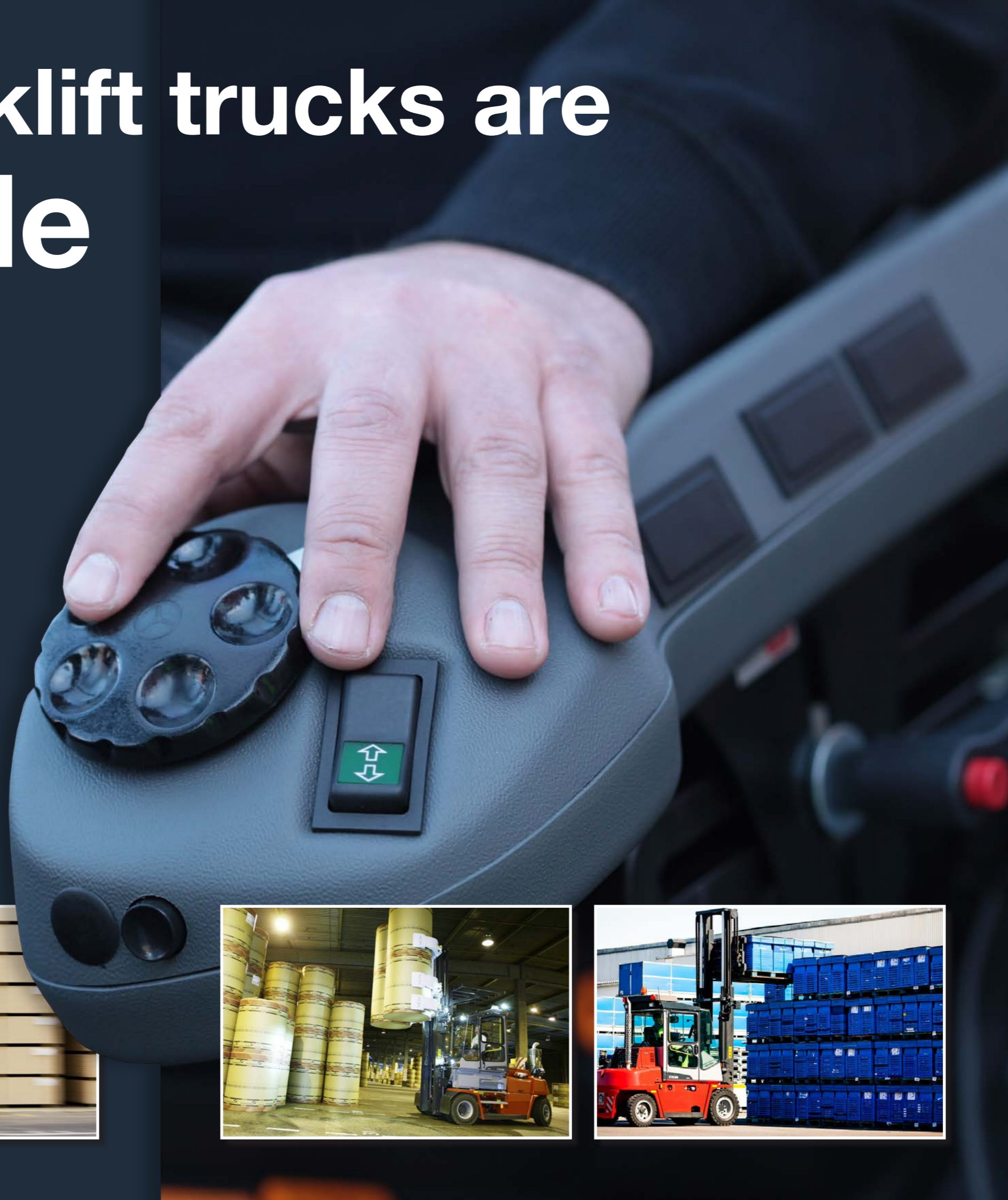
# 9 out of 10 forklift trucks are tailor made

No forklift truck is as adaptable as Kalmar. You can have yours designed exactly the way you want it. In fact, 90 percent of DCF50–90 forklift trucks are tailor made for specific purposes. Our ability to perfectly customise every truck builds on decades of close cooperation with our customers.

Typical Kalmar customers won't settle for an off-the-shelf product. They want their truck to be designed their way to meet their exact requirements. And we take pride in delivering it to them.

The job is not done at the drawing board alone. To truly understand our customers' needs, we study the terms and condition of their production in their own environment. Through continuous feedback, we have been able to establish a modularized production platform based on best practices.

Although we build almost all forklift trucks on specification, we are able to re-use customer solutions and tailor trucks based on standard product components. This makes each truck perfectly suitable, yet affordable, for use in a variety of industries including pulp and paper, wood, stevedoring and metal.



# A smorgasbord of opportunities

No two production lines are identical. So why should the forklift truck be? We adapt your truck to your production conditions, not the other way around.

## CHOOSE BETWEEN A VARIETY OF OPTIONS

### ECC (Electronic Climate Control)

Comes with automatic climate control, which ensures cabin comfort whether in tropical or sub-zero conditions.



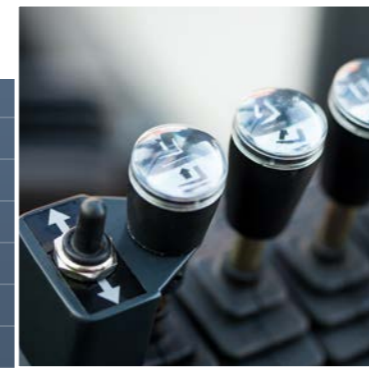
The type of engine, the engine's power rating, the driveline, the wheelbase, the cabin – just about anything can be tailored on a Kalmar truck. Not to mention the vast number of masts, forks and attachments for many different applications.

### Interior of the Spirit Delta

Choose between no less than five variants. Spirit Delta (standard cabin), Spirit Delta Space (rotatable seat), Globetrotter (extra high cabin interior), FlexCab (open guard with glass windows), or FlexGuard (open cabin).

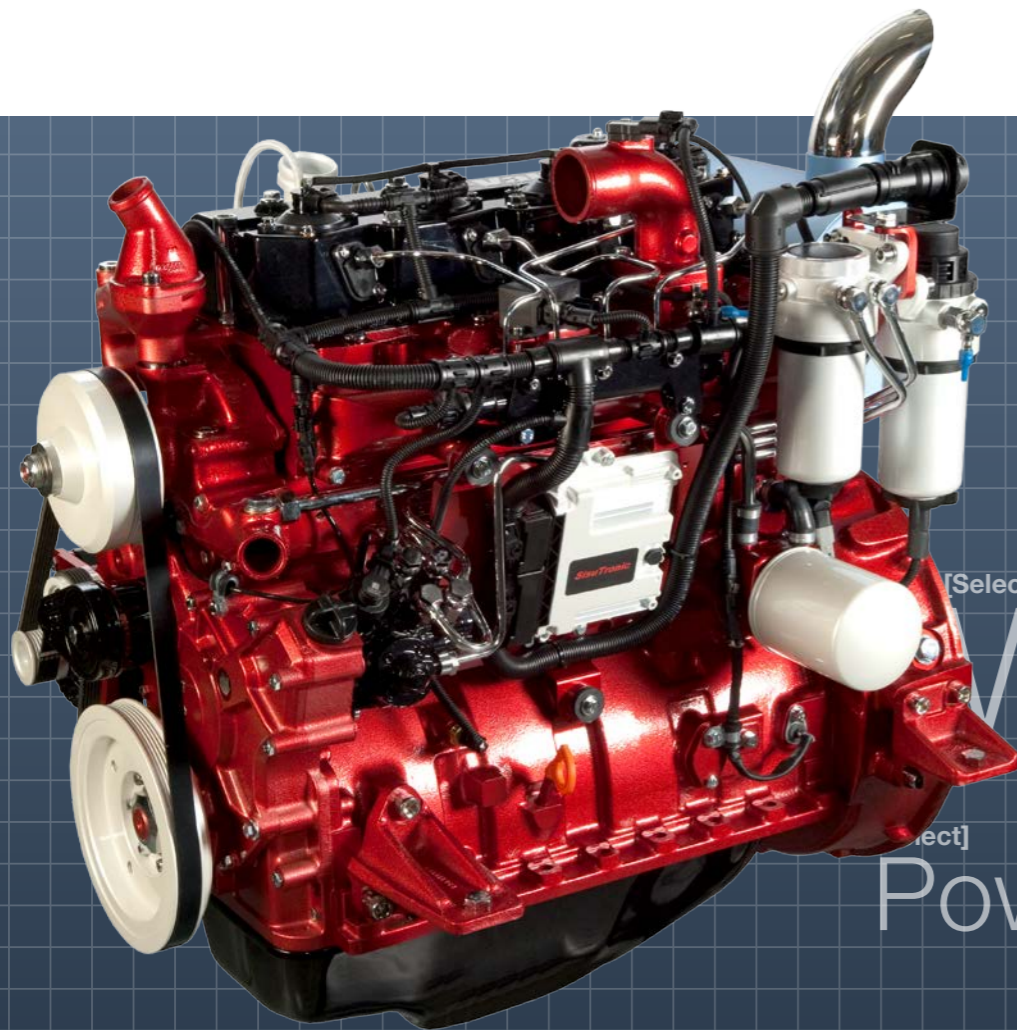
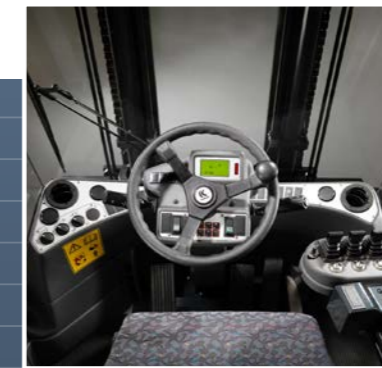
### Reversible hydraulic fan

The fan direction can be reversed to clean the cooler and its filters from harmful dust and particles. Perfect for dusty environments, such as in a sawmill.



### Lever with forward/reverse control

Allows you to change direction by simply switching the lever. Perfect when operating the machine in narrow spaces, with frequent changes of direction.



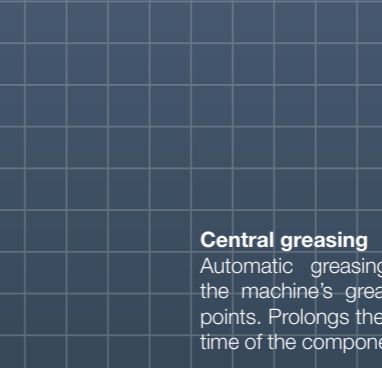
[Select] Forks  
[Select] Drive

[Select] Wheelbase

[Select] Power  
[Select] Cabin

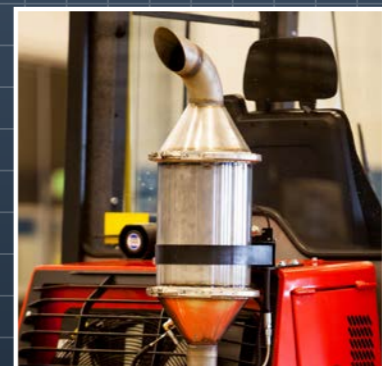
[Select] Model

The AC90 AW144 meets all current emission regulations (Stage IIIB/Tier 4i). The engine is available in two power ratings, 77 kW and 85 kW.



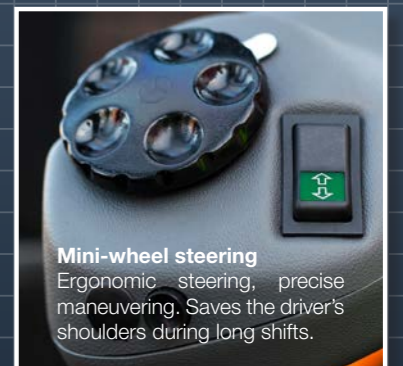
### Central greasing

Automatic greasing of the machine's greasing points. Prolongs the lifetime of the components.



### Particular filter

Reduces emission levels even further. A crucial option when operating in a sensitive environment, such as in grocery handling or in a crowded space.



### Mini-wheel steering

Ergonomic steering, precise maneuvering. Saves the driver's shoulders during long shifts.

Kalmar offers the widest range of cargo handling solutions and services to ports, terminals, distribution centres and to heavy industry. Kalmar is the industry forerunner in terminal automation and in energy efficient container handling, with one in four container movements around the globe being handled by a Kalmar solution. Through its extensive product portfolio, global service network and ability to enable a seamless integration of different terminal processes, Kalmar improves the efficiency of every move.

**[www.kalmarglobal.com](http://www.kalmarglobal.com)**

Kalmar is part of Cargotec. Cargotec's sales totalled EUR 3.1 billion in 2011 and it employs approximately 10,500 people. Cargotec's class B shares are quoted on NASDAQ OMX Helsinki under symbol CGCBV.

**Cargotec Sweden AB**  
Torggatan 3  
SE-340 10, Lidhult  
Sweden  
tel. +46 372 260 10  
**[www.kalmarglobal.com](http://www.kalmarglobal.com)**

SB-LITF3-EN-WW / 2013.05.27

