



The Gloria Range of Reachstackers

DRG450-1300 Range



Meet Gloria

Our Gloria range of reachstackers is our most extensive to date.

It is available with a broad range of lifting capacities and attachments which can be fitted to suit your specific requirements. From moving fully laden containers to shifting 130 tonne wind generator segments, all can be accomplished safely, effectively, and efficiently - just as you would expect from a Kalmar Reachstacker.

What can you expect from Gloria?



Continuously improved performance and availability levels.



An ergonomically designed cabin that's more comfortable and safer for your operators.



A range of reachstackers and options that can help reduce your carbon emissions.



A more connected experience and a range of digital support services.

Kalmar, the home of the reachstacker

Over forty years ago, in Lidhult, Sweden, we built the world's first commercial reachstacker. Based on the idea that containers could be handled more flexibly, with higher stacking, deeper reach and improved storage capacity, the concept soon became a worldwide success. It marked a new standard in operational efficiency and reliability: one that continues to this day with one of the world's oldest operating reachstackers. Delivered in 1990, it's a machine that is still running strong in Guangzhou, China, after 40,000 hours on the job – and counting.

Now, with over 11,000 reachstackers operating in over 160 countries, we are known for designing and building reachstackers that are safe, reliable, highly efficient; and can stack higher and deeper than other machines. All while continually adapting and innovating to meet the changing needs of both material and container handlers around the globe.

With our range of Gloria Reachstackers, decades of innovative thinking and clever design is once again paying off for our customers, as this generation of reachstackers delivers a leap forward in productivity, ergonomics, and operational efficiency. Now you just need to work out which of our reachstackers is most suited to your operational needs. We are here to help.



With decades of innovative thinking and clever design.

Optimising uptime

With our latest generation of reachstackers, we've managed to boost performance once again with newly designed integrated components and improved operator interfaces. The result? Simplified maintenance, fewer faults, and a major increase in service intervals.

Improved component integration

Kalmar's G-Generation reachstackers have taken a big leap forward in component integration and construction. For example, our new segmented wiring makes maintenance and replacement simpler and quicker. And with fewer exposed components there is less wear on wiring, hydraulics, and other connectors, improving the reliability and availability of your Kalmar Reachstacker.

Longer service periods

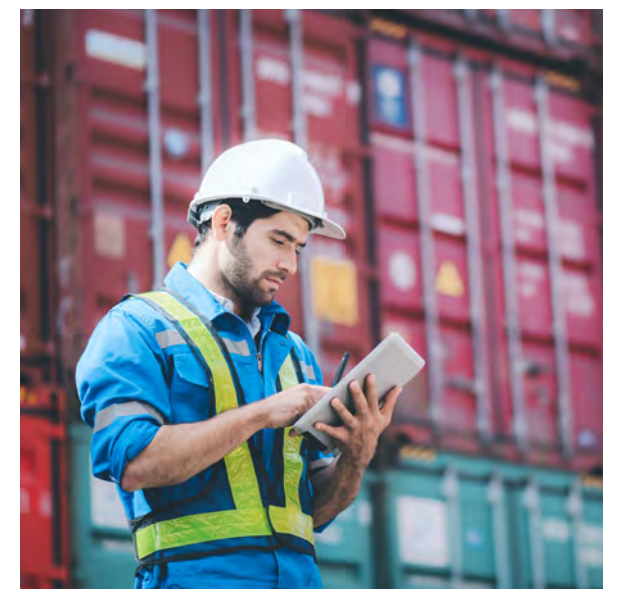
Our G-Generation reachstackers have longer service intervals than previous generations, elevating uptime and reducing costs. Combined with Kalmar's global service and after-sales network that is second to none, these improvements make our latest range of reachstackers a frontrunner in non-stop productivity.

Proactive monitoring

Kalmar was the world's first manufacturer to use Can-bus technology as a standard, as it automatically locates failures, compensating with backup bus wires and connectors before the fault can affect your machine. Since an individual electrical component and its backup very rarely fail together, the result is a highly reliable self-correcting pro-active system.

Easier to service

With all major service points accessible from the ground and an engine bay with removable top covers, you'll find it quicker and safer to perform routine checks and maintenance tasks on G-Generation reachstackers.



Safer and more comfortable

Keeping your drivers safe and comfortable is not only good for your drivers, it's also good for business. Which is why each of our G-Generation reachstackers is fitted with our ergonomically designed EGO cabin, giving your drivers a safer and more comfortable work environment.

G-Generation joystick.

The G-Generation joystick with built-in gear knob is designed to improve driving efficiency. The joystick is optimised for best performance, ensuring precise and efficient control and is ergonomically enhanced to reduce arm fatigue. There are also other optional joysticks available if required.

Adjustable multi-seat.

Fully integrated Kalmar seats have been carefully developed to ensure the best possible comfort and sitting posture for long shifts and demanding operations for your drivers. There are a wide range of mechanical and air cushioned seats to choose from so you will be sure to find one that suits your drivers' needs.

High-capacity wipers.

With over 60% curved windscreen drying surface, these wipers provide optimal visibility for higher productivity and safety when operating in the rain.

Comfort pedals.

A flexible and fail-safe pedal system with adjustable pedal angles is fitted as standard to minimise foot strain. It's a floor-based solution with a hanging pedal feel, so your drivers can drive a full shift and experience less foot and leg fatigue.

Climate package.

An electronic climate control system is fitted as standard to keep your operators as comfortable as possible in most conditions. Large air intakes mean easy filter replacement in the front, whilst a well-designed climate control system provides superior interior comfort.

Ergonomic steering wheel.

Our patented steering wheel has been specially engineered to reduce stress and increase productivity through careful testing. It is fully adjustable and can also be tilted at an angle to the side for comfortable manoeuvring in any situation.

Work console.

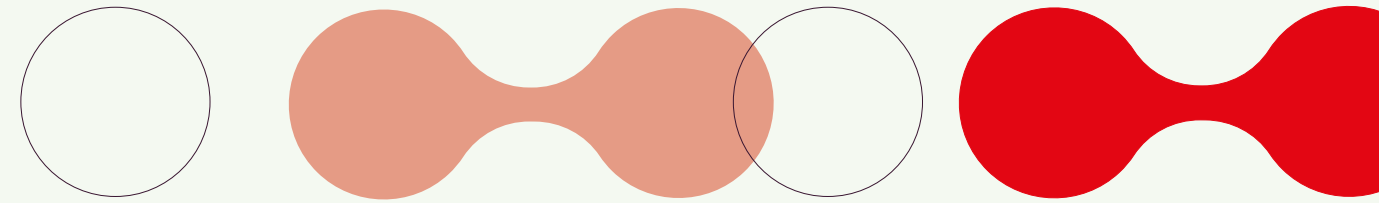
Your operator will find all the key controls, switches, and indicators within easy reach in our ergonomically designed cabin. Work consoles are also adjustable as we know that no two drivers are the same.

Intuitive interfaces.

Kalmar's colour user interface [HMI] used across the range has been intuitively designed for ease of use, with information displayed clearly and logically to ensure that your drivers are kept fully informed.

Enhanced safety.

To further enhance safety, your reachstacker can be fitted with extra cameras to see what is going on behind, additional lights for operating in limited light or at night, a fire suppression system in case of fire on board, and an alco-lock to make sure your drivers are always in complete control of their machine.





Improved visibility

An open cabin design for optimised visibility at all angles. Smart profiles and curved windows combine to give exceptionally strong forward, diagonal, and rearward visibility.

A range of optional cameras are available that can be mounted in different positions on your reachstacker to improve the operator's visibility of their operating environment.



Meet the Gloria range



The reliability, robustness and success of Gloria’s platform has allowed us to extend our initial offering to meet a variety of material handling needs.

Initially designed as a top loader, Gloria now comes in models that have been specifically designed for industrial, intermodal and barge handling applications. Gloria’s family has been further expanded with the addition of the Kalmar Eco Reachstacker and the Kalmar Electric Reachstacker.



Gloria Range*	DRG450S	DRG450S	DRG450C	DRG570-1300Z	DRG500-850A
Eco Range	DRG450SE	DRG450SE	DRG450CE	DRG570-700ZE	DRG500-600AE
Electric Range	ERG450S	ERG450S	ERG450C	ERG700Z	ERG540A

* Including Super Gloria



The Kalmar Eco Reachstacker

In comparison to older machines, Kalmar’s Eco Reachstacker can reduce your fuel consumption by up to 40%, and by up to 25% when compared to more recent machines, cutting your fuel costs and emissions while matching the productivity levels of machines with much larger engines.



The Kalmar Electric Reachstacker

Kalmar’s electrically powered range of reachstackers produce zero emissions at source helping to improve the eco-efficiency of your operations while maintaining the highest levels of productivity and safety. With a choice of lifting capacities, attachments, modular battery options and charging solutions, we can work with you to design a solution that will deliver for your business.

Cut costs and lower carbon

Whether you're striving to save on fuel or meet ever tougher emissions standards, your objectives are the same: to reduce costs and lower your carbon emissions. Thanks to our range of smart functions and driver training programmes, operators get all the assistance they need to minimise fuel costs while becoming more eco-efficient.

Cut carbon emissions by up to 90%

HVO100 fuel is a fossil free diesel substitute made from vegetable oil that can be used across the range, cutting carbon emissions by up to 90%. HVO100 is produced by using sustainably sourced vegetable and animal matter to ensure its production does not have any negative impact on the environment and has a chemical structure like diesel fuel, allowing it to be substituted for diesel without any impact on the efficiency of your equipment. HVO100 that meets the EN15940 standard is seen as the best and easiest paraffinic option available to help reduce your carbon emissions immediately.

Options to cut fuel costs

There are many small optional things you can do to reduce your fuel consumption and emissions even further.



Start/stop function.

An optional start/stop function can be added to automatically stop the engine when the machine is inactive and restart it when work resumes. It helps reduce fuel consumption, lowers emissions, and extends component lifespan.



Tyre pressure monitoring.

This option provides an integrated tyre pressure monitoring system that gives your driver constant updates on the pressure of each individually monitored tyre. It's an effective way to prevent blowouts and maintain the optimal tyre pressure, further reducing your fuel consumption and emissions by up to 10%.



Automatic engine and ignition shut-down at idle.

This option automatically shuts down the engine and ignition after a period of inactivity. The shutdown timing can be programmed to fit any needed interval, giving you full control over when the system activates. When enabled, the system will detect when the vehicle is idling without a driver and power down automatically after the selected time.

Eco Drive Modes

Choose between three different drive modes, each optimised to meet your operational requirements. The reachstacker can be adapted to every task at hand, shifting many times during the day. The operator easily shifts between modes by using the cabin display screen.

Power

Brings out the maximum performance of your machine, allowing you to increase the number of tonnes moved per hour.

Normal

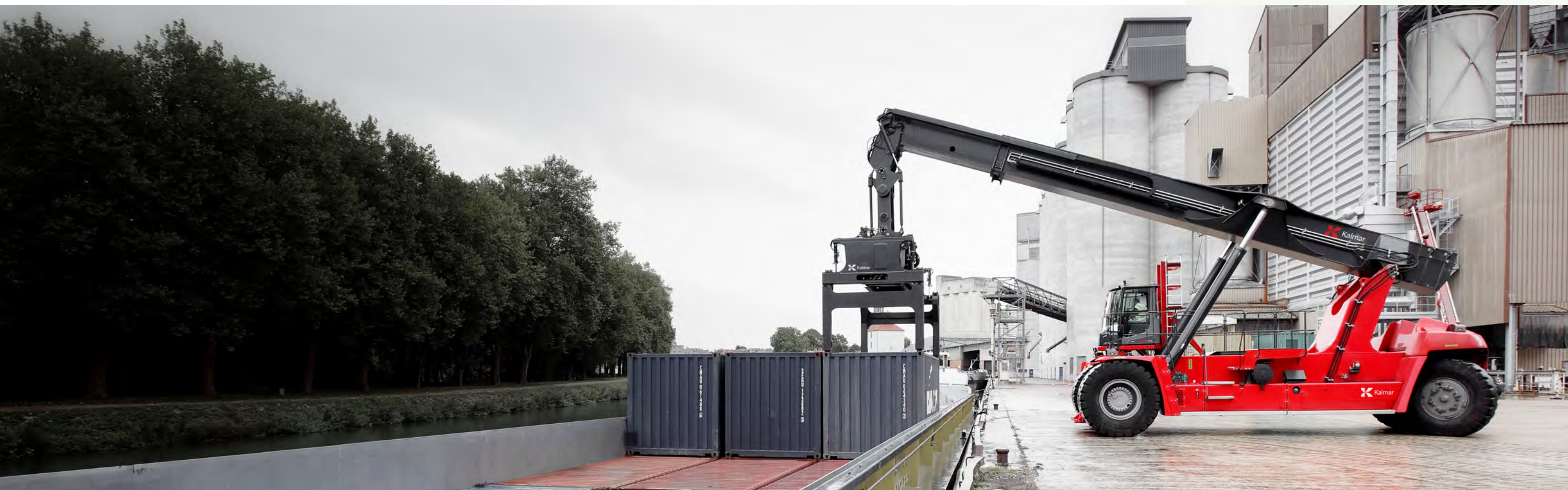
Balances power and economy to optimise profitability and reduce fuel consumption by up to 10%.

Save up to **10%**

Economy

If total cost of operations outweighs the need for performance, Economy Mode reduces fuel consumption by up to 20%.

Save up to **20%**



More options

Kalmar has a range of options that make operating your equipment even safer



Fire Suppression System. To protect your operator and machine from fire you can fit a Fire Suppression System* to your machine. The system utilises multiple spray nozzles that release a high pressure water mist where the fire has been detected from a re-chargeable water tank. This can be activated manually or automatically through an in-cabin temperature sensor.



Alcolock. To ensure that your driver is at their best when operating your equipment you can install an Alcolock system. This system makes sure that the driver meets alcohol blood level standards before being able to start the machine, much like a breathalyser.



Visual and Sound Alert Solutions. In work environments with limited sight, mixed traffic, and/or pedestrians in the vicinity, e.g., warehouses, lumber or container yards, the lowest level of safety precaution is to ensure the surroundings are made aware of the moving equipment. We have visual alert solutions such as rotating beacon, strobe flash, or blue spot safety light available. As an audible alternative or complement, a Reverse Alarm with beeping or white sound function can be selected.



Reverse Warning System.** Working side by side with moving vehicles poses a safety risk, especially when reversing. The Reverse Warning System helps protect your personnel by combining four rear sensors, a reversing camera, and an acoustic alert. Real-time visual and audio feedback is sent to an in-cabin display, helping drivers stay aware of their surroundings and alert to any dangers.



Additional Lighting. Extra lighting, particularly if you operate your machine at night, as you can bring greater operational visibility and safety for personnel working on the site. You can choose additional LED working lamps on specific positions.



Kalmar Safety Cameras and Detection Solutions.** There is a wide range of camera and detection solutions available that will enhance the overall safety of your equipment when in operation. Cameras will extend and enhance the driver's visibility range, improving safety and productivity depending on placement. Top-level options offer surround view, the ability to record the course of events, and alert the driver of pedestrians in the vicinity of the equipment. Adding radar sensors will warn about objects when reversing. You can choose one solution or combine a number together.

Kalmar has a range of solutions that will help make your equipment more eco-efficient and sustainable



Tyre Pressure Monitoring System. Helps to reduce wear and tear on tyres which results in reduced fuel consumption. Bluetooth sensors keep the driver advised of the condition of the tyres continually. Active care of your tyres can result in a 10-40% increase in tyre life.



Reduced Steering Radius System. By reducing the overall steering radius of your reachstacker you will reduce wear and tear, extending the life of your tyres.



Drive Speed Limitation System. Automatically restricts the speed at which your equipment can be operated, helping to reduce wear and tear as well as fuel consumption.



Start/Stop Function. An optional start/stop function can be added to automatically activate and deactivate the machine. In addition to reducing unnecessary emissions and extending the lifespan of components, this makes it possible to achieve up to 10% in fuel savings.

* Cannot suppress an electrical fire.

** Part of the Kalmar EagleEye offering.



Kalmar solutions that help make your equipment more productive



ECO Drive Mode settings. Three drive mode settings will allow you to adapt equipment performance to the required productivity levels at any time. This will ensure maximum performance when needed and reduced fuel consumption and wear and tear at low productivity times.



Kalmar Insight. Complete overview and management of your fleet and individual equipment performance will allow you to optimise both overall performance and individual equipment and driver performance to ensure high and efficient productivity levels.

SmartPort SmartRead*



Automatic Container ID Capture. A smart solution that automatically captures and records the container ID from the roof while the equipment is handling it, no manual data entry, no more missed containers.



Damage Detection Made Easy. SmartRead also detects and records visible damage to the container roof, helping you stay on top of potential issues before they become problems.



Seamless Integration. SmartRead in combination with other SmartPort modules automatically captures data that can be fed straight into your Terminal Operating System, so you always know what's in your yard and where, minimising the risk of human error or ghost containers.

* Installation costs and/or an annual subscription fee may apply.

Move whatever you need

Based on your specific needs, the G-Generation reachstacker is available with a complete range of standard and customised features, attachments making it suitable for many different applications.

Guaranteed to deliver.

With a choice of:

- wheelbases from 6,0 up to 9,25 metre
- lifting capacities from 45 to 130 tonnes
- powerful and fuel efficient drivelines combinations to choose from
- attachments which include hooks, magnets, coil rams and a tool carrier which can have a variety of tools fitted.

The G-Generation reachstacker is available for container, intermodal, barge and industrial handling. Whatever your application, our aim is to help adapt your reachstacker for the best possible lifetime utilisation.

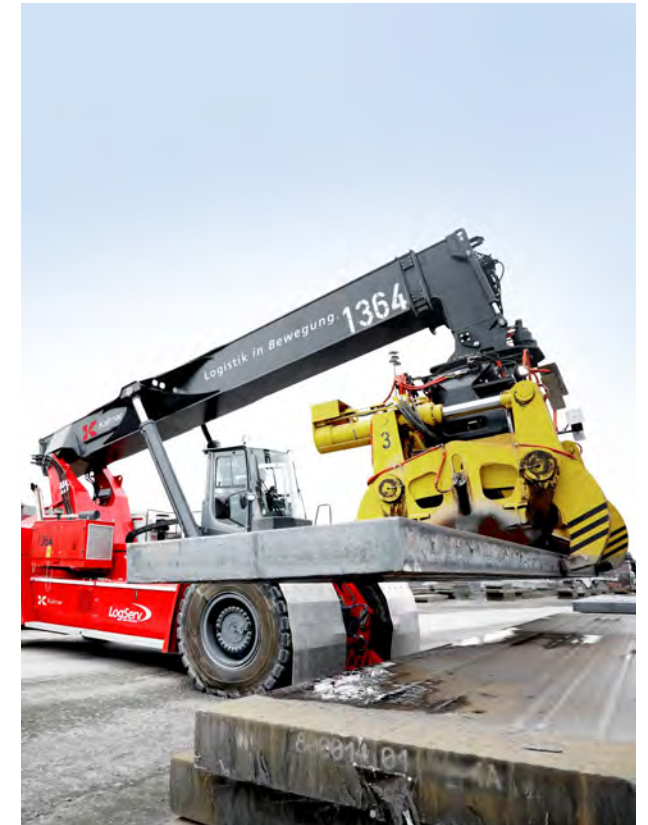
When you need to handle very heavy loads

Kalmar's Super Gloria Reachstacker has a top lifting capacity of 130 tonnes or when working in tandem can lift loads of over 200 tonnes, up to 13 metres high. Initially developed for the wind industry to move wind turbine - lifting hubs, blades, towers and nacelles, which are large, heavy and bulky - Super Gloria has proven that it can handle the heaviest of loads efficiently and safely for any application.

Container handling



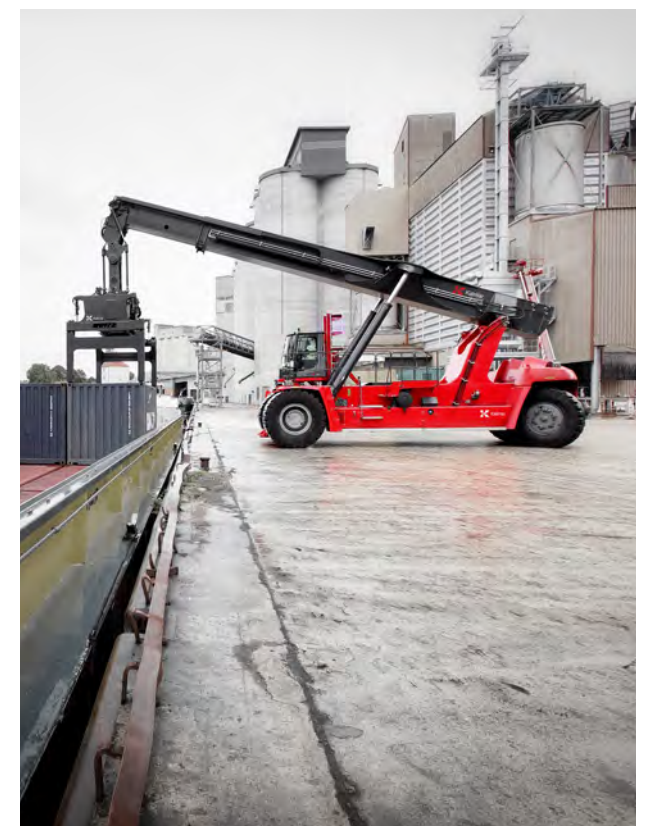
Industrial handling



Intermodal handling



Trimodal/barge handling



Safety fitted as standard

For Kalmar, the safety of your drivers and maintenance staff is of critical importance, which is why our machines come with many more safety features fitted as standard than other machines available in the market.

The features listed here come fitted as standard on all Kalmar machines. You can enhance your employees' safety further by fitting your machine with our additional safety options listed on the following pages.

All Kalmar equipment is compliant with EN 1175:2020.

At Kalmar, the safety of people working with our machines is always at the top of our minds, which is why meeting global safety standards is important to us. The safety standard EN 1175:2020, which sets the electrical and electronic component standards for industrial trucks, has been updated to improve the safety of these machines while in operation. This update is valid from April 2023. All Kalmar counter balanced machines, including reachstackers, empty container handlers and forklifts have been updated to meet this new standard to ensure that working with a Kalmar machine is as safe as it can be.



2-point seat belt. Ensures that your driver is safe and secure while operating our equipment, all Kalmar machines are equipped with an adjustable 2-point seat belt system.



3-point Contact System. Makes sure your drivers are safe when entering or exiting our equipment. All machines are fitted with steps and handles to ensure they can always maintain three points of contact with the vehicle, helping to prevent accidents.



Double brake pedals. The right-hand-side brake pedal is intended for emergency braking, particularly useful for operators familiar with traditional automotive controls, allowing the driver to choose which foot to use, providing more flexibility.



Steps with anti-slip protection. To reduce the risk of your driver slipping or falling on our equipment, all entering and exiting points are fitted with non-slip surfaces giving them extra grip, so your drivers stay safe.



Control System. All our equipment is fitted with an electronic Control System for monitoring the machine's different functions while in operation, helping to keep your driver fully informed at all times with up-to-date Operating, Event Controlled and Error Code information.



Operating information. Our equipment's Control System provides several operating information menus, which give your operator and maintenance personnel a great insight into the on-going performance of the machine, allowing them to keep it running optimally.



Event controlled information. Provided through the Overload Protection System to warn the driver through the equipment's Control System if their load exceeds the specified safety limits.



Error code information. Should there be any issue with your equipment while in operation, the electronic control system will immediately alert your driver with the appropriate error code, so they know exactly what is going on and can take appropriate action.



Display. Cabins are fitted with an easy to read display which keeps your drivers fully aware of the machine's on-going performance and any maintenance actions that need to be taken.



Control breaker Stop Switch. Manually activated switch to immediately stop all power transmission and load handling functions in emergencies. This switch cuts power to both the hydraulic and electric drive systems to be as safe as possible.



External reverse light. For the safety of others, all our equipment is equipped with external reversing lights that help the driver keep everyone informed that they are moving backwards.



Operator Presence Detection System. Maintains safety for both the driver and pedestrians, as all our equipment is fitted with an alarm or visual indicator that comes on automatically if:

- the seat belt requirement while driving is not met - seat belt not fastened while in operation
- the driver leaves the driver's seat without engaging the parking brake.

The system includes a buzzer in the cab and visual warning lights. Additionally, if the driver leaves the seat while the machine is active, the electric drive is shut off and load-handling functions are disabled.



Engine/transmission Protection and Warning Systems. Warning systems, designed to protect your machine's driveline in case of higher than expected temperatures or a pressure build up, are standard on all equipment, avoiding unnecessary mechanical failures.



LED lights. These come fitted as standard on all our equipment, providing better visibility when working in reduced light.



Neutral Start Interlock. It prevents the machine from starting unless all drive and load handling controls are in a neutral position. This protects the driveline and ensures there's no unintended movement when powering on the machine.



Protection against falling objects. Cabin roof windows on all our equipment are fitted with high strength materials which can withstand heavy blows, helping to protect your drivers from falling objects.



Good visibility. Kalmar cabins provide your drivers with excellent visibility, forwards, upwards, sideways and behind them to help them stay safe while in operation.



Anti-slip Protection Tape on fenders and tanks. Anti-slip Protection Tape provides additional traction on fenders and tanks to reduce any slipping hazards for driver's and maintenance personnel while working on your Kalmar Reachstacker.



Reverse Camera System. Knowing what is going on behind you is critical when reversing your machine, which is why they are all fitted with a high-resolution [1080p] cabin display screen and reversing camera.



Speed Limiter outside transport mode. Makes sure your Kalmar Reachstacker is always operating at a safe speed when it isn't carrying a load, helping to reduce the risk of accidents and promoting safe operating practices.



Towing Coupling with removable pin. Should something go wrong with your Kalmar Reachstacker we have made it safer to use both tow bars and tow slings making it quicker and easier to recover your machine.



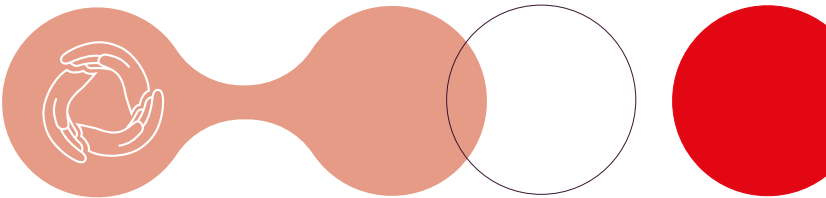
Keep moving with Kalmar Services

To keep your business moving Kalmar Services offers a range of services that can help you keep your equipment moving optimally.

Kalmar Care

Care that keeps your business moving.
With Kalmar Care you get a flexible service that's built around your business. Including, the experience and knowledge of Kalmar's dedicated staff, coupled with transparency and increased predictability of costs.

Kalmar Care is available in three different service models: our two customisable contracts – Essential Care and Complete Care – and our flexible solution On Demand Care.



Service models:



Essential Care
A maintenance solution to keep your equipment in an optimal condition.



Complete Care
A complete service solution providing piece of mind and maximum equipment uptime.

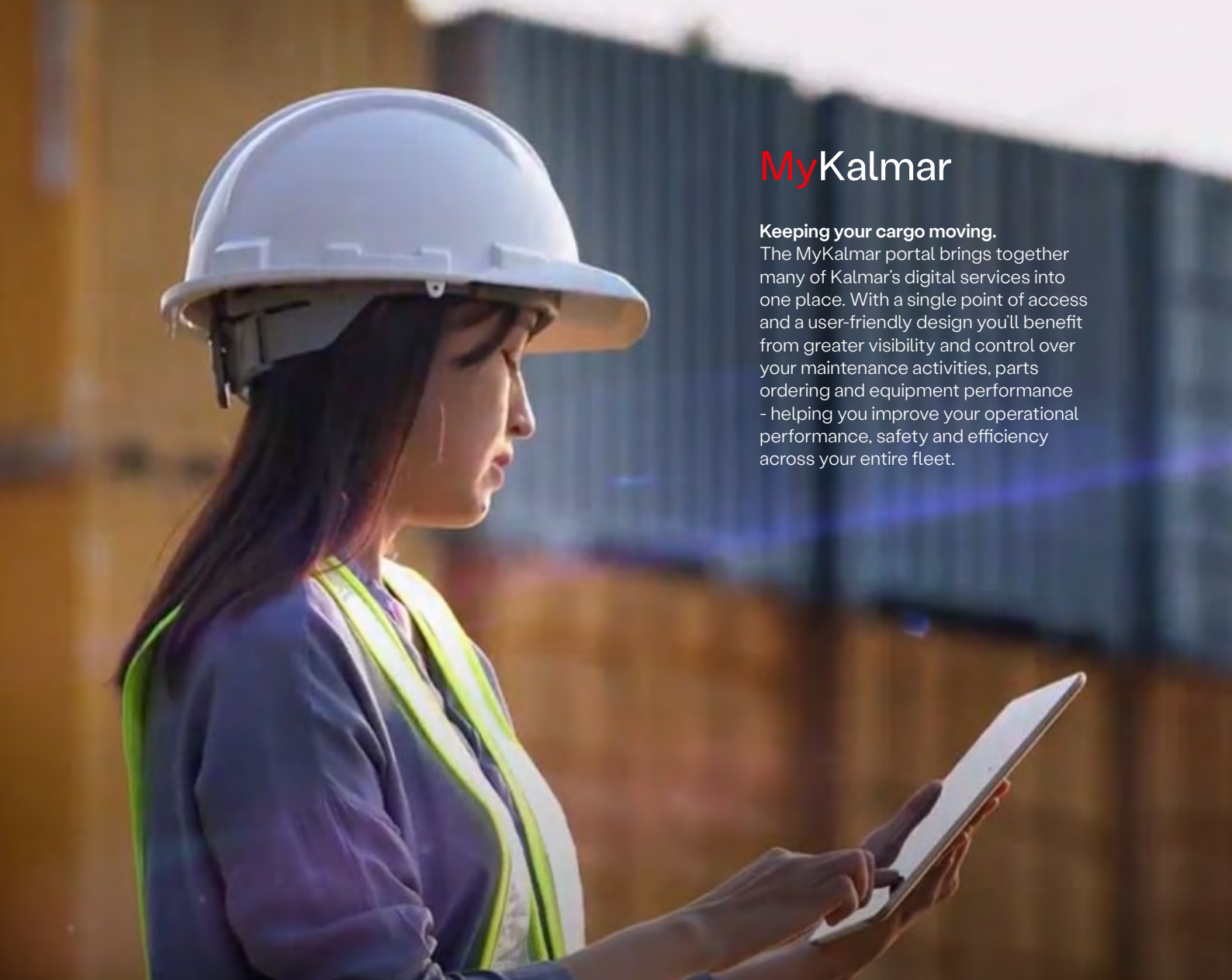


On Demand Care
Top-of-the-line service whenever you need it.

Maintenance Planning	●	●
Preventive Maintenance	●	●
Predictive Maintenance		●
Corrective Maintenance		●
Preventive Spare Parts	●	●
Corrective Spare Parts		●
Lubricants	●	●
MyKalmar	●	●
Kalmar Insight	●	●
Tyre Maintenance		●
Battery Maintenance		●

● Included ● Optional

Top-of-the-line service
whenever you need it



MyKalmar

Keeping your cargo moving.

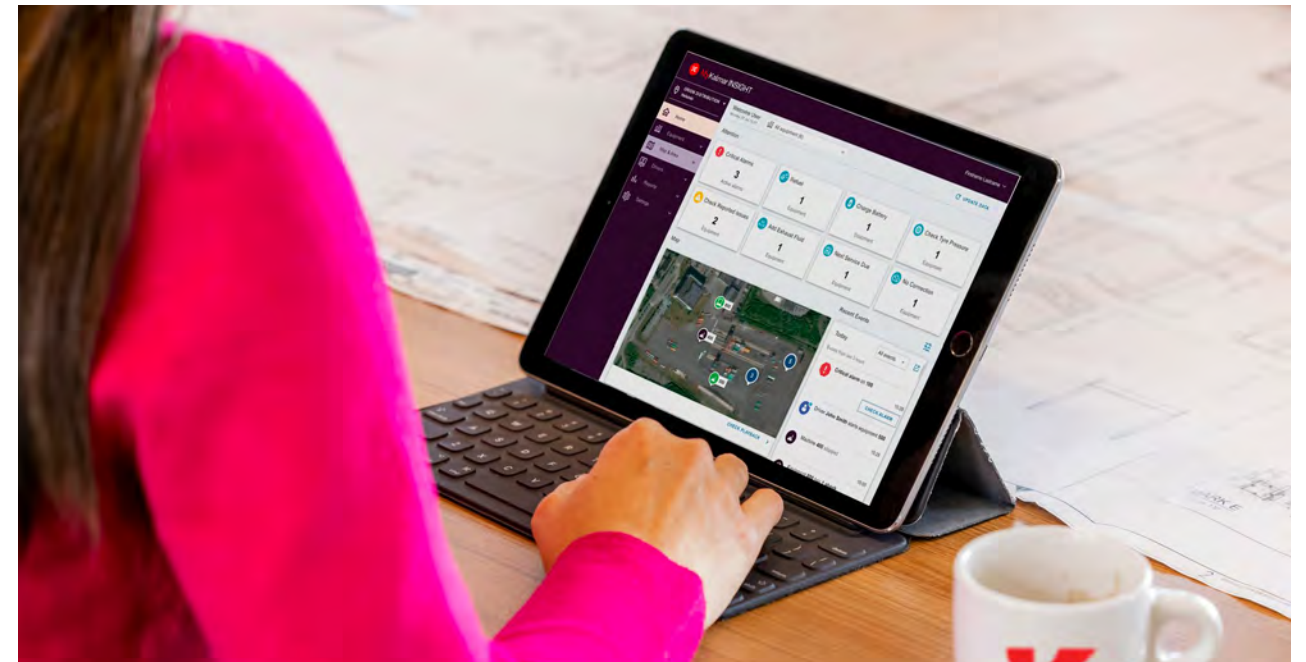
The MyKalmar portal brings together many of Kalmar's digital services into one place. With a single point of access and a user-friendly design you'll benefit from greater visibility and control over your maintenance activities, parts ordering and equipment performance - helping you improve your operational performance, safety and efficiency across your entire fleet.

Kalmar Insight

Optimise your operations with Insight.

Kalmar Insight* is a performance management tool for cargo handling, which gives you an easy to use overview of your fleet operations, by aggregating data from multiple sources, including equipment built by other manufacturers. Review your entire fleet activities, schedule maintenance activities and

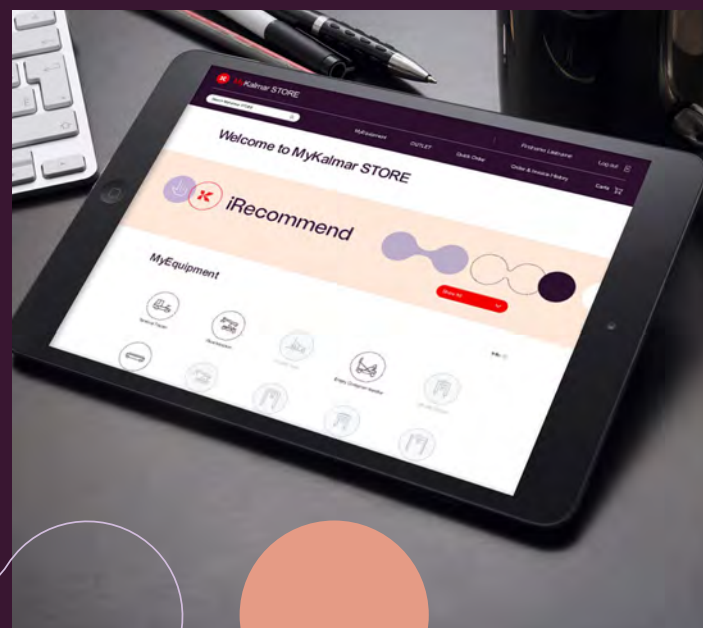
order the required parts automatically. All enabling you to take action on real-time information, that will help improve your overall operations immediately. Kalmar Insight comes fitted and ready to be activated in all new Kalmar equipment, it can also be retrofitted into existing Kalmar equipment or those built by other manufacturers.



*Installation costs and/or an annual subscription fee may apply.

MyKalmar STORE

MyKalmar STORE is your one stop shop for all the parts you need which is accessible through MyKalmar. Open 24/7, accessible on any screen and available in different languages, MyKalmar STORE stocks 100s of thousands of Kalmar Genuine Parts at any given time and we can have them delivered quickly to you, no matter where you are in the world. You can search, order and then track your order all through the same application. MyKalmar STORE has been designed to make your life easier.



Kalmar Training

Enhance your skills.

To get the most out of your new machine our training centre offers a range of courses for both your technicians and operators. Operators can be taught how to drive the machine for optimum performance and minimum waste, and to learn what needs to be checked daily for optimal safety. Technicians can be educated with the knowledge they need to keep your new equipment in top condition in a safe way. Courses are a mix of theory and hands-on experience.



Standard

Kalmar DRG450-1300
Kalmar DRG 450S-500S (S = Top Lift)
Kalmar DRG 450C-450C (C = Combi Lift)
Kalmar DRG 540A-850A (A = Tool Carrier)
Kalmar DRG 570Z-1300Z (Z = Lift Hook)

Norms Standards and Regulations

- Machinery Directive 2006/42/EC
- Safety Industrial Trucks Standard ISO 3691-2, (EN 1459+A3)
- Safety Low & High Lift Trucks Standard ANSI / ITSDF B56.1
- Stability of Reachstackers Standards ISO 22915-1, -12
- Electrics / Electronics Standard EN 1175
- Electromagnetic Compatibility Directive 2014/30/EC
- Electromagnetic Compatibility Standard EN 12895
- CE-marking (EU/EEA)
- ANSI / ITSDF-marking Forklift Trucks (USA/CAN)
- AS-marking (Australia)
- UKCA-marking (UK)
- Supply of Machinery (Safety) Regulations 2008 (UK)

DRG540A and DRG850A

- Machinery Directive 2006/42/EC
- Safety Industrial Trucks Standard ISO 3691-2, (EN 1459+A3)
- Safety Low & High Lift Trucks Standard ANSI / ITSDF B56.1
- Stability of Reachstackers ISO 22915-1, -11
- Electrics / Electronics Standard EN 1175
- Electromagnetic Compatibility Directive 2014/30/EC
- Electromagnetic Compatibility Standard EN 12895
- Noise Emission Directive 2000/14/EC and 2005/88/EC
- Noise Emission Standard EN 12053
- CE-marking (EU/EEA)
- ANSI / ITSDF-marking Forklift Trucks (USA/CAN)
- AS-marking (Australia)
- UKCA-marking (UK)
- Supply of Machinery (Safety) Regulations 2008 (UK)

Chassis

- Strong and durable heavy-duty chassis
- Safe access steps, platform & hand rails (LHS)
- Long bottom access step (on both sides)
- Lifting eyes and anchor points (front & rear)
- Good rear end visibility of the truck
- Towing pin (rear)

Body

- Steps with anti-slip protection
- Anti slip protection on fenders and tanks
- Rear view mirrors (2x) - rear on front mudguards
- Strong and protective mudguards (front & rear)
- Basic noise insulation for the entire truck

Steer Axle (Rear)

- Kalmar steer axle mounted dual pivot bearings
- Orbitrol power steering with double acting cylinder
- Wheel nut protection on steer tyres

Drive Axle (Front)

- Kessler planetary axle with differential drive
- Wide axle for high side stability (4150 mm)
- Oil-cooled Wet Disc Brakes (WDB)
- High pressure filter (10 µm) for the brakes
- Brake oil tank (140 lit), cooling & breather filter

Wheels (Tyres and Rims)

- Strong wheels (tyres and rims) in 18.00x25"/PR40, 18.00x33"/PR40, 21.00x35"/PR40 and 24.00x35" (6x)

Drivetrain

- Dana TE-30510 (no lock-up)
- Various engine options
- 6-cylinder diesel engines with pre-heater
- High power & torque with low fuel consumption
- Engine monitoring and protection systems
- Automatic transmission Dana TE-30510
- Precise, soft and efficient shifting of both gears and directions with 5 + 3 gears (F/R)
- Transmission monitoring and reverse protection
- Heavy-duty radiators for engine, transmission, brakes & hydraulics
- Diesel tank (550 l), cooling & breather filter

Load-Sensing Hydraulics

- Load-sensing variable piston pumps
- Power-on-demand with high lift & lowering speeds
- Pumps for boom, spreader, brakes & steering
- Vane pumps for brake & oil cooling (2x)
- Return filters for the work hydraulics (2x/10 µm)
- Hydraulic long-life fine filter with bypass (5 µm)
- Servo filter for the work hydraulics (10 µm)
- Pressure filter for the brakes (10 µm)
- Regeneration high-speed lifting & extension
- Boom end-damping (in-out/up-down/20-40°)
- Hydraulic tank (600 lit), cooling, breather filter & ORFS-couplings

Lifting Boom

- Strong, durable box-type boom with guide pads
- Boom with 2 lift cylinders & 1 extension cylinder
- Boom end-damping (in-out/up-down/20-40°)

Attachment

- Top Lift (S), 45 tonnes, 20-40', MPS, TWL, 4 lift hooks, sideshift and rotation
- Combi Lift (C), 45 tonnes, 20-30-40', HPS, TWL, 4 lift legs, 4 hooks, end tilt+lock, sideshift & rotation
- Tool Carrier (A), max 85 tonnes, MPS, TWL (2,50 x 0,76 m), 4 lift eyes, sideshift and rotation
- Lift Hook (Z), max 130 tonnes, dual hook, free pivot, free rotation and 4 lift eyes (no rotation)
- S-C-A = 4 floating twistlocks, LED indication lamps and 2 LED work lamps
- S-C-A = Safety locking, alignment pins (4x) and sensors (4x)
- S-C-A = Rotation +195/-105 deg (2 motors and 2 brakes)
- S-C-A = Lift hooks for slings on end beams (4x)
- S-A = Mechanical Pile Slope MPS ±5 deg
- C = Hydraulic HPS ±5 deg
- Large sideshift (S-C = ±800 mm / A = ±450 mm)

Electrical System 24V

- Battery box 2x12V (24V) & main power switch
- Electric service box on chassis (LHS)
- 2 LED head lights on front fenders (one beam)
- 2 LED working lights on boom
- 2 LED working lights on front edge cabin
- 2 LED rear lights on fenders (when reversing)
- 2 LED working lights on attachment (S + C + A)
- 2 position LED-lights on each side of the truck
- 2 LED tail lights / brake LED-lights
- 4 blinker LED-lights (front - rear / left - right)
- 2 LED flashing brake lights (when reversing)
- 1 rotating warning LED-beacon (on pole / LHS)
- 1 acoustic signal / reverse alarm (in reverse)

Cabin (EGO)

Structure

- Hydraulic sliding cabin (stroke 2375 mm)
- Spacious, modern cabin with good ergonomics
- Large windows, good visibility, in all directions
- Manual moveable cabin (stroke 2375 mm)
- Step for roof access
- Instep handle (left side)
- Sliding window on both sides
- Doors with air damper and key lock (L + R)
- Tinted laminated windows

Comfort

- Comfort seat Kalmar, mechanical spring, high back
- Adjustable armrest (RHS) & 2-point safety belt
- Inside rear view mirror (right side)
- Interior lights with fade away function
- Fully adjustable steering wheel incl tilt function
- Fully adjustable colour display
- Electric adjustable operational console with joystick, operational buttons & armrest (RHS)
- Power steering wheel with steer knob
- Electric horn
- LED background light for buttons & switches

Safety

- Colour display TFT-7" (17 cm), inside cabin
- Reverse camera, 1x, rear on counter weight
- Speed limit outside transport mode

Controls

- Joystick for boom, spreader & forward / reverse
- Auto rev-up accelerator at lifting/extension
- Electric accelerator for driving

- Double brake pedals (L + R)
- Button for electronic hand brake (on/off)
- Safety override for hydraulic functions (by code)
- Multi-function lever (LHS) horn, gear/direction switch, high/low beam
- Warning - hand brake (on/off) leaving seat
- Hour meter

Climate

- ECC, electronic climate control, powerful cooler, heater and ventilator
- Air-condition incl. fresh air and recirculation filter
- Wipers/washers; dual wipers on front window, single wipers on rear and roof windows
- Interval wiper functions on front, rear and roof

Information Systems

- Colour display & automatic fault analysis
- Menu control with toggle wheel & push buttons
- Electronic safety, overload, scale & synchronized lift functions
- Longitudinal Load Moment Indicator (LLMI) (pop-up menu)
- Longitudinal Load Moment Control (LLMC) (pop-up menu)

ECO Drive Modes

- Power mode
- Normal mode
- Eco mode

Operator menu

- System voltage
- Engine rpm
- Travelling speed (km/h or mph)
- Hydraulic oil temperature
- Transmission oil temperature
- Engine oil pressure & coolant level
- Engine oil level
- Load weight (capacity) & Load Centre info (mm)
- Boom extension & Boom angle
- Clock and date & operating time (hours)
- Service time indicator (hours)
- Boom angle and Boom extension
- Electronic weight scale functions
- Status of Heating, Ventilation and AC system (HVAC)
- Fuel level (diesel and optional AdBlue)
- Estimated operating time before empty tank (hour/min)
- Service indicator
- Container counter with reset function
- Trip computer / statistics

Various warning lights & signals

- Charging battery
- Low brake pressure
- Failure indicator
- Safety system disconnected
- High engine coolant temperature
- Low engine coolant level
- Low engine oil pressure
- Preheating engine
- Transmission oil temperature
- Low fuel level
- Hydraulic oil temperature

Indicator lamps

- Direction indication
- Parking brake

Fleet Management

- Equipped with telemetric hardware for Kalmar Insight

Colour

- Cabin: Iron-Grey RAL 7011
- Chassis, tanks & mudguards: Red RAL 3000
- Boom, attachment & axles: Black RAL 7021
- Rims: Iron-Grey RAL 7011

Documentation and Decals

- Load chart diagram inside cabin
- Machine data sign on chassis incl. load chart
- Warning, tyre pressure & oil pressure stickers
- Information & joystick stickers
- Fuse diagram
- Instruction manual
- Maintenance manual, digitally
- Spare parts catalogue, digitally

Warranty

- 12 months / 2000 hours

Options

Kalmar DRG 450S-500S (S = Top Lift)
Kalmar DRG 450C-450C (C = Combi Lift)
Kalmar DRG 540A-850A (A = Tool Carrier)
Kalmar DRG 570Z-1300Z (Z = Lift Hook)

Chassis

- DRG ranges in Toplift (S), Intermodal (C), Tool Carrier (A) and Lift Hook (Z)
- Wheelbases; 6,00 - 7,50 m (Gloria range)
- Wheelbases; 8,25 - 9,25 m (Super Gloria range)

Body

- Noise insulation kit for the entire truck
- Storage boxes (2x) left and right tank
- Mud flaps (front or/and rear)

Steer Axle (Rear)

- Steer cylinder spacer (less tyre wear)

Wheels (Tyres & Rims)

- Pre-Cleaner air intake incl. raised air intake
- Spare wheels, tires and rims for 18.00x25", 18.00x33", 21.00x35" and 24.00x35"

Drivetrain

- Dana TE-30510 (no lock-up)
- Volvo, TAD-1151-VE - 265 kW (EU Stage 3A / EPA Tier 3)
- Volvo, TAD-1152-VE - 285 kW (EU Stage 3A / EPA Tier 3)
- Volvo, TAD-1181-VE - 265 kW (EU Stage 5 / EPA Tier 4F / KMOE 5)
- Volvo, TAD-1182-VE 285 kW (EU Stage 5 / EPA Tier 4F)
- Cummins QSM-11-C330 - 246 kW (EU Stage 3A / EPA Tier 3)
- Auto engine & ignition stop, after 5 min idle
- Pre-Cleaner air intake incl. raised air intake

Attachment

- Tilt function F/R ±2 deg, tilt lock, speed 5 km/h
- Hydraulics Pile Slope, HPS ±5 deg (side tilt), incl tilt lock and speed 5 km/h
- Rotation stop at ±25 deg (incl override switch)
- Automatic extension 20'-40' incl 30' stop
- Barge: Overhigh Folding Legs (L=1,6/2,0 m)
- Barge: extended boom nose (L=1,0/1,6/2,0 m)
- 2 extra lift eyes, centre of spreader (2 x 22,5 T)
- 4 extra lift eyes, middle of spreader (4 x 11,2 T)
- Soft landing with ultrasonic sensor (less noise)
- Twistlock rubber damper (100 mm longer)
- Extended twistlocks 300 mm (250 mm longer)
- Cylinder extension 20'-40' on standard/Tilt/HPS
- WTP spreader - cylinder extension replace chains
- Big Tilt 0-55 deg, 45 / 32 tonnes, sideways
- Big Tilt 0-55 deg, 45 / 32 tonnes, lengthways
- Big Tilt with hydraulic door opener
- Coil ram, 35 tonnes, coil ID/OD = 500/3000 mm, slave attachment for 20ft or Tool Carrier
- Various industrial lift units, mounted in slave attachments for 20ft or Tool Carrier

Electrical System 24V

- Radio with CD / MP3 / Bluetooth
- DAB-Radio with CD, MP3, Bluetooth, speakers (24V)
- 2 x 24V sockets and 1 x 12V socket in cabin
- 2 x 5V / USB sockets in cabin
- Electric air pressure horn
- Height limitation system for lifting boom
- Load centre limitation for lifting boom
- Extra working light, LED 4x, on front mudguards
- Extra working light, LED 2x, on spreader
- Extra working light, LED 2x, middle of boom
- Extra working light, LED 4x, front of boom
- Extra reverse light, LED 2x, on rear light bracket
- Extra rotating beacon, LED, in boom nose front
- Extra rotating beacon, LED, right side on CW
- Flash light replacing beacon on boom
- Nato starter socket 24V (1x)
- Electric heated mirrors, front fender/standard position
- Electric heated and adjustable mirrors, on front fenders (standard position)
- Tyre pressure monitoring system (Bluetooth)
- Cabin heater incl 220V outlet
- Diesel powered cabin heater 5 kW

Cabin

Structure

- Hydraulic elevating cab (stroke 2850 mm)
- anti-collision function, avoid load hitting (Speed limitation depending on cabin position)
- Extended rear cabin window 100mm

Comfort

- Seat with air-cushion, heating & 3-p belt
- Seat cover in vinyl
- Head rest for the seat
- Armrest with adjustment (LHS)
- Horizontal dampening/suspension of seat
- Grammer Actimo XL, air-cushion, heat, 3-p belt
- Isringhausen 6830KA/870, air-cush, heat, 3-p belt
- Extra trainer seat incl 2-p safety belt (LHS)
- Bracket for terminal and monitor (RHS)
- Write pad, A4 paper box & reading lamp (RHS)
- Extra rear-view mirror inside cabin

Controls

- Lever steering incl switch for forward/reverse
- Mini-wheel steering incl F-N-R switch
- Override key switch
- EGO joystick
- Otto Joystick - Universal Grip with OPS / without OPS

Climate

- Sun visor front-roof-rear windows (of black net)
- Sun visor roof window (of reflecting film)
- Post-heating (break heater function)

Additional Equipment

- Fire extinguisher 6 kg, powder
- Tool kit
- Extra sound insulation - reduction 3 dB(A)
- Lockable fuel cap
- Central greasing (base truck + steering)
- Central greasing (entire spreader)
- Filter kit 2000 - 4000 hrs

Safety

- Reverse camera with 7" single view monitor
- Reverse camera with 7" split view monitor
- Reverse camera with 10" split view monitor
- Forward camera at front of chassis, 1x, above drive axle
- Forward camera front of inner boom / outer boom
- Twistlock cameras, 2x, in spreader end beams
- Combi legs camera, 2x, facing down on trailer
- Radar sensors for object detection rearward
- 360° camera system with pedestrian detection & DVR
- Enhanced Safety Package including:
 - Reverse warning system including sensors
 - Tyre pressure monitoring system
 - Seat belt interlock (machine will not go in gear if seat belt is off)
- Alcolock Draeger in cabin
- Height limitation system for lifting boom, specify height
- Including load center limitation for lifting boom
- Semi-automatic fire suppression system
- Various speed limitations (with/without load)
- Speed warning at 15km/h
- Speed limitation (default setting 19km/h) able to customise speed limitation

Information Systems

- VDI - Vehicle Data Interface

Fleet Management

- Kalmar Insight licence (only certified countries)
- Kalmar Insight Driver Monitor (RFID reader + 10 unique driver tags)
- Kalmar Insight extra driver tags (10 tags)

Kalmar Load Measurement System

- Semi-automatic weight checking and recording system including time, date and load
- SOLAS compliant (VGM - Verified Gross Mass)

Colour

- Other RAL colour than standard, chassis
- Special and multiple colours, chassis
- Other colour than standard, striping foil
- Reinforced anti-corrosion protection

Documentation and Decals

- Extra set of documentation
- Workshop manuals
- Volvo workshop manual
- Load chart lbs/inch in cab & sign "no riders"
- Documentation on CD or memory stick
- Maintenance manual, printed
- Spare parts catalogue, printed

Training

- Various training packages, for drivers, service, maintenance, software etc
- Contact Kalmar Training Centre for more information and planning

Warranty

- Extended warranty packages available
- Additional warranty packages available:
 - Gold (complete forklift): max 5 yr/10.000h
 - Silver (drive line): max 8 yr/16.000h
 - Bronze (structural parts): max 10 yr/20.000h
- Contact Kalmar for more information

Specifications¹

				DRG450-60S5	DRG450-60S5M	DRG450-60S5X
LIFT MODEL CAPACITY	Type of handling			WB 6m - Container		
	Lift capacity, row 1-2-3-4	Q1 - Q2 - Q3- Q4	tons	45 - 27 - 13	45 - 30 - 15	45 - 35 - 18
	Lift capacity, row 1-2-3-4 (with jacks)	Q1 - Q2 - Q3- Q4	tons			
	Load centre, from front face of tyres, row 1-2-3-4	L4 - L5 - L6 - L7	mm	1965 - 3815 - 6315		1865 - 3815 - 6315 - 8815
	Stacking capacity, in container row 1-2-3-4 of 8'6" / 9'6"		mm	5/5 - 5/4 - 4/3	5/5 - 5/4 - 4/3	5/5 - 5/4 - 4/3
	Lost load centre, to front face of tyres	X	mm	835	835	935
WEIGHTS ¹	Wheelbase	L3	mm	6000	6000	6000
	Service weight, standard truck		kg	67400	69400	77500
	Axle load, front at load centre L4, unloaded - loaded	(no jacks)	kg	34600 - 100600	34600 - 100600	35600 - 101600
	Axle load, front at load centre L5, unloaded - loaded	(no jacks)	kg	39000 - 86900	39000 - 92200	40200 - 102900
	Axle load, rear at load centre L4, unloaded - loaded		kg	32800 - 11800	34800 - 13800	41900 - 20900
	Axle load, rear at load centre L5, unloaded - loaded		kg	28400 - 7500	30400 - 7200	37300 - 9600
REACHSTACKER DIMENSIONS	Boom angle, min - max		deg	0 - 60	0 - 60	0 - 60
	Boom height, min - max	H3 - H5	mm	4600 - 18200	4600 - 18200	4700 - 18300
	Chassis height - top of boom fixation, max	H2	mm	3925	3925	4025
	Lift height, max	H4	mm	15100	15100	15200
	Boom reach stroke		mm	7000	7000	7000
	Truck height - seat height	H6 - H8	mm	4600 - 2575	4600 - 2575	4700 - 2680
	Overall truck length with boom	L	mm	11300	11300	11200
	Truck width over drive axle	B	mm	4150	4150	4150
	Spreader sideshift	V1	mm	±/-800 (1600)	±/-800 (1600)	±/-800 (1600)
	Spreader rotation		deg	±195/-105	±195/-105	±195/-105
	Ground clearance	min	mm	250	250	300
	Aisle width with 20'-40' container	A1 - A2	mm	11350 - 13600	11350 - 13600	11350 - 13600
	Turning radius, outer with 20'-40' container (at 90 degree turn)	R1 - R3	mm	8250 - 9400	8250 - 9400	8100 - 9400
	Turning radius, outer (at 90 degree turn)	R1	mm	-	-	-
WHEELS	Wheels	Number of wheels, front – rear (x = driven)		4* – 2		
	Tyres	Pneumatics, type / pressure (front - rear)		Diagonal / 1.0		
		Dimensions, front – rear		tum	18.00×25"	18.00×25" 18.00×33"
	Rims	Dimensions, front – rear			13.00x25"/2.5	13.00x25"/2.5 13.00x33"/2.5
		Track width (front - rear)		S1 - S2	3030 - 2600	3030 - 2600 3030 - 2800
AXLES	Steer axle	Manufacturer, type - designation		Kalmar steer axle / hydraulic power steering / double acting single cylinder		
	Drive axle	Manufacturer, type - designation		Kessler D102-PL341 / drive axle with differential and hub reduction		
	Service brakes	Type – affected wheels		Oil cooled wet disc brakes (WDB) / drive wheels		
	Parking brake	Type – affected wheels		Single dry disc / spring activated - hydraulic release / drive wheels		
HYDRAULICS	Hydraulics	System type / pump type		Load-sensing function / power-on-demand / variable piston pumps		
	Oil pres-sure	Max working pressure boom / spreader		MPa	23 / 16	
	Tank	Oil volume		Lit	740 (600 + 140)	
		Fuel tank, capacity		Lit	550	
		AdBlue tank, capacity		Lit	35	

DRG450-65S5	DRG450-65S5X	DRG450-65S5XS	DRG450-65S6	DRG450-65S6X	DRG450-65S6H	DRG450-65S6HX	DRG450-65S6HXS
WB 6.5m - Container							
45 - 32 - 16	45 - 38 - 21	45 - 38 - 21	45 - 32 - 16 - 9	45 - 38 - 21 - 12	45 - 33 - 18 - 10	45 - 39 - 21 - 13	45 - 39 - 21 - 13
		45 - 41 - 29					45 - 41 - 29 - 18
1965 - 3815 - 6315	1865 - 3815 - 6315		2265 - 3815 - 6315	2165 - 3815 - 6315	2965 - 3815 - 6315 - 8815	2865 - 3815 - 6315 - 8815	
5/5 - 5/4 - 4/3	5/5 - 5/4 - 4/3	5/5 - 5/4 - 4/3	6/5 - 5/5 - 4/4 - 2/2	6/5 - 5/5 - 4/4 - 2/2	6/6 - 6/5 - 5/4 - 4/3	6/6 - 6/5 - 5/4 - 4/3	6/6 - 6/5 - 5/4 - 4/3
835	935	935	835	935	835	935	935
6500	6500	6500	6500	6500	6500	6500	6500
69500	77300	80300	70500	77500	73500	82500	83500
35000 - 99400	36000 - 100400	38500 - 102900	36000 - 102500	36500 - 103000	39000 - 110300	41500 - 112800	42500 - 113800
39000 - 93900	40300 - 106000	42800 - 108600	39500 - 94400	40200 - 105900	41000 - 97600	43800 - 111300	44800 - 112300
34500 - 15100	41300 - 21900	41800 - 22400	34500 - 13000	41000 - 19500	34500 - 8200	41000 - 14700	41000 - 14700
30500 - 7600	37100 - 9300	37500 - 9700	31000 - 8100	37300 - 9600	32500 - 8900	38700 - 10200	38700 - 10200
0 - 60	0 - 60	0 - 60	0 - 62	0 - 62	0 - 63	0 - 63	0 - 63
4600 - 18200	4700 - 18300	4700 - 18300	4500 - 19250	4600 - 19350	4700 - 20800	4700 - 20900	4700 - 20900
3925	4025	4025	3925	4025	3925	3925	3925
15100	15200	15100	16200	16300	17700	17800	17800
7000	7000	7000	7700	7700	8500	8500	8500
4600 - 2575	4700 - 2675	4700 - 2675	4500 - 2575	4600 - 2675	4700 - 2575	4700 - 2675	4700 - 2675
11700	11700	11700	12000	12000	12700	12700	12700
4150	4150	4150	4150	4150	4150	4150	4150
±/-800 (1600)	±/-800 (1600)	±/-800 (1600)	±/-800 (1600)	±/-800 (1600)	±/-800 (1600)	±/-800 (1600)	±/-800 (1600)
±195/-105	±195/-105	±195/-105	±195/-105	±195/-105	±195/-105	±195/-105	±195/-105
250	300	300	250	300	250	300	300
11600 - 13600	11600 - 13600	11600 - 13600	11900 - 13900	11900 - 13900	12300 - 14150	12300 - 14150	12300 - 14150
8500 - 9400	8500 - 9400	8500 - 9400	8500 - 9450	8500 - 9450	8600 - 9450	8600 - 9450	8600 - 9450
-	-	-	-	-	-	-	-
4* – 2							
Diagonal / 1.0							
18.00×25"	18.00×33"	18.00×33"	18.00×25"	18.00×33"	18.00×25"	18.00×33"	18.00×33"
13.00x25"/2.5	13.00x33"/2.5	13.00x33"/2.5	13.00x25"/2.5	13.00x33"/2.5	13.00x25"/2.5	13.00x33"/2.5	13.00x33"/2.5
3030 - 2600	3030 - 2800	3030 - 2800	3030 - 2600	3030 - 2800	3030 - 2600	3030 - 2800	3030 - 2800
Kalmar steer axle / hydraulic power steering / double acting single cylinder							
Kessler D102-PL341 / drive axle with differential and hub reduction							
Oil cooled wet disc brakes (WDB) / drive wheels							
Single dry disc / spring activated - hydraulic release / drive wheels							
Load-sensing function / power-on-demand / variable piston pumps							
23 / 16							
740 (600 + 140)							
550							
35							

1. Weights and axle loadings are preliminary and are subject to change:
DRG450-92C5X, DRG450-82C5X, DRG850-82A4X ,
DRG850-82A4XS, DRG1000-82ZXs DRG1300-92ZXs

2. 360 / 360 (endless) for lifting hook

3. Lift eyes
DRG850-82A4X 100 - 87 - 68 - 55 - 46 (no jacks)
DRG850-82A4XS 100 - 100 - 80 - 72 - 60 (with jacks)
DRG850-92A4X 100 - 92 - 75 - 53 - 39 (no jacks)
DRG850-92A4XS 100 - 100 - 89 - 68 - 50 (with jacks)

Specifications¹

				DRG450-70S5X	DRG450-70S5XS
LIFT MODEL CAPACITY	Type of handling			WB 7-7.5m - Container	
	Lift capacity, row 1-2-3-4	Q1 - Q2 - Q3- Q4	tons	45 - 41 - 23	45 - 41 - 23
	Lift capacity, row 1-2-3-4 (with jacks)	Q1 - Q2 - Q3- Q4	tons	-	45 - 41 - 31
	Load centre, from front face of tyres, row 1-2-3-4	L4 - L5 - L6 - L7	mm	1865 - 3815 - 6315	
	Stacking capacity, in container row 1-2-3-4 of 8'6" / 9'6"		mm	5/5 - 5/4 - 4/3	5/5 - 5/4 - 4/3
	Lost load centre, to front face of tyres	X	mm	935	935
WEIGHTS ¹	Wheelbase	L3	mm	7000	7000
	Service weight, standard truck		kg	79300	80300
	Axle load, front at load centre L4, unloaded - loaded	(no jacks)	kg	38000 - 101100	39000 - 102000
	Axle load, front at load centre L5, unloaded - loaded	(no jacks)	kg	42100- 111000	43000 - 111800
	Axle load, rear at load centre L4, unloaded - loaded		kg	41200 - 23200	41300 - 23300
	Axle load, rear at load centre L5, unloaded - loaded		kg	37200 - 9300	37300 - 9500
REACHSTACKER DIMENSIONS	Boom angle, min - max		deg	0 - 60	0 - 60
	Boom height, min - max	H3 - H5	mm	4700 - 18300	4700 - 18300
	Chassis height - top of boom fixation, max	H2	mm	4025	4050
	Lift height, max	H4	mm	15100	15100
	Boom reach stroke		mm	7000	7000
	Truck height - seat height	H6 - H8	mm	4700 - 2680	4700 - 2680
	Overall truck length with boom	L	mm	12300	12300
	Truck width over drive axle	B	mm	4150	4150
	Spreader sideshift	V1	mm	=+/-800 (1600)	=+/-800 (1600)
	Spreader rotation		deg	=+195/-105	=+195/-105
	Ground clearance	min	mm	300	300
	Aisle width with 20'-40' container	A1 - A2	mm	12250 - 13600	12250 - 13600
	Turning radius, outer with 20'-40' container (at 90 degree turn)	R1 - R3	mm	9150 - 9400	9150 - 9400
	Turning radius, outer (at 90 degree turn)	R1	mm	-	-
WHEELS	Wheels	Number of wheels, front – rear (x = driven)		4* – 2	
	Tyres	Pneumatics, type / pressure (front - rear)		Diagonal / 1.0	
		Dimensions, front – rear		18.00×33"	
	Rims	Dimensions, front – rear		13.00x33"/2.5	
		Track width (front - rear)		3030 - 2800	
AXLES	Steer axle	Manufacturer, type - designation		Kalmar steer axle / hydraulic power steering / double acting single cylinder	
	Drive axle	Manufacturer, type - designation		Kessler D102-PL341 / drive axle with differential and hub reduction	
	Service brakes	Type – affected wheels		Oil cooled wet disc brakes (WDB) / drive wheels	
	Parking brake	Type – affected wheels		Single dry disc / spring activated - hydraulic release / drive wheels	
HYDRAULICS	Hydraulics	System type / pump type		Load-sensing function / power-on-demand / variable piston pumps	
	Oil pressure	Max working pressure boom / spreader		MPa	23 / 16
	Tank	Oil volume		Lit	740 (600 + 140)
		Fuel tank, capacity		Lit	550
		AdBlue tank, capacity		Lit	35

DRG450-70S6HXS	DRG450-75S5XS	DRG450-75S6HXS	DRG450-82S5X	DRG450-82S5XS	DRG450-92S5X	DRG450-92S5XS
WB 7-7.5m - Container			WB 8.25 - 9.25m - Container			
45 - 41 - 23 -14	45 - 45 - 26	45 - 45 - 27 - 17	45 - 45 - 37 - 24	45 - 45 - 37 - 24	45 - 45 - 41 - 28	45 - 45 - 43 - 28
45 - 41 - 31 -19	45 - 45 - 34	45 - 45 - 35 - 23	-	45 - 45 - 45 - 32	-	45 - 45 - 45 - 36
1865 / 2865 - 4650 - 7150 - 9650	1865 - 3815 - 6315	2865 - 3815 - 6315 - 8815	2765 - 3915 - 6415 - 8915			
6/6 - 6/5 - 5/4 - 3/2	5/5 - 5/4 - 4/3	6/6 - 6/5 - 5/4 - 4/3	5/5 - 5/5 - 5/5 - 4/4	5/5 - 5/5 - 5/5 - 4/4	5/5 - 5/5 - 5/5 - 4/4	5/5 - 5/5 - 5/5 - 4/4
935	935	935	1035	1035	1035	1035
7000	7500	7500	8250	8250	9250	9250
84400	82400	87200	104200	105200	106200	107200
42600-112000	40000 - 101800	43900 - 111700	52600 - 118300	53600 - 119300	53600 - 119300	54600 - 120300
44700-113500	43800 - 117300	46000 - 119500	54900 - 126900	55900 - 127900	55900 - 127900	56900 - 128900
41800-17400	42400 - 25600	43300 - 20500	51600 - 30900	51600 - 30900	51600 - 33100	51600 - 33100
39700-11900	38600 - 10100	41200 - 12700	49300 - 22300	49500 - 22300	49500 - 25400	49500 - 25400
0 - 63	0 - 58	0 - 61	0 - 47	0 - 47	0 - 47	0 - 47
4700 - 20900	4750 - 18400	4750 - 21000	5250 - 19400	5250 - 19400	5250 - 19400	5250 - 19400
4025	4025	4025	4300	4300	4300	4300
17800	15200	17800	15800	15800	15800	15800
8500	7000	8500	8500	8500	8500	8500
4700 - 2680	4750 - 2675	4750 - 2675	5250 - 2950	5250 - 2950	5250 - 2950	5250 - 2950
13300	12800	13700	14700	14700	15700	15700
4150	4150	4150	4600	4600	4600	4600
=+/-800 (1600)	=+/-800 (1600)	=+/-800 (1600)	=+/-800 (1600)	=+/-800 (1600)	=+/-800 (1600)	=+/-800 (1600)
=+195/-105	=+195/-105	=+195/-105	=+195/-105	=+195/-105	=+195/-105	=+195/-105
300	300	300	300	300	300	300
12950 - 14350	12650 - 13600	13100 - 14350	15900 - 16700	15900 - 16700	16150	17000 - 17200
9150 - 9500	9550 - 9500	9400 - 9500	11300 - 12100	11300 - 12100	12450 - 12650	12450 - 12650
-	-	-	-	-	-	-
4* – 2			4* – 2			
Diagonal / 1.0			Diagonal / 1.0			
18.00×33"			21.00×35"	21.00×35"	21.00×35"	21.00×35"
13.00x33"/2.5			15.00x35"/3.0	15.00x35"/3.0	15.00x35"/3.0	15.00x35"/3.0
3030 - 2800			3250 - 3300	3250 - 3300	3250 - 3300	3250 - 3300
Kalmar steer axle / hydraulic power steering / double acting single cylinder			Kalmar steer axle / hydraulic power steering / double acting single cylinder			
Kessler D102-PL341 / drive axle with differential and hub reduction			Kessler D111-P447/PL545 / drive axle with differential and hub reduction			
Oil cooled wet disc brakes (WDB) / drive wheels			Oil cooled wet disc brakes (WDB) / drive wheels			
Single dry disc / spring activated - hydraulic release / drive wheels			Single dry disc / spring activated - hydraulic release / drive wheels			
Load-sensing function / power-on-demand / variable piston pumps			Load-sensing function / power-on-demand / variable piston pumps			
23 / 16			23 / 16			
740 (600 + 140)			840 (700 + 140)			
550			580			
35			35			

1. Weights and axle loadings are preliminary and are subject to change:
DRG450-92C5X, DRG450-82C5X, DRG850-82A4X ,
DRG850-82A4XS, DRG1000-82ZXs DRG1300-92ZXs

3. Lift eyes
DRG850-82A4X 100 - 87 - 68 - 55 - 46 (no jacks)
DRG850-82A4XS 100 - 100 - 80 - 72 - 60 (with jacks)
DRG850-92A4X 100 - 92 - 75 - 53 - 39 (no jacks)
DRG850-92A4XS 100 - 100 - 89 - 68 - 50 (with jacks)

2. 360 / 360 (endless) for lifting hook

Specifications¹

				DRG450-60C5	DRG450-60C5X
LIFT MODEL CAPACITY	Type of handling			WB 6 - 6.5 m - Intermodal	
	Lift capacity, row 1-2-3-4	Q1 - Q2 - Q3- Q4	tons	45 - 25 - 10	45 - 32 - 15
	Lift capacity, row 1-2-3-4 (with jacks)	Q1 - Q2 - Q3- Q4	tons	-	-
	Load centre, from front face of tyres, row 1-2-3-4	L4 - L5 - L6 - L7	mm	1965 - 3815 - 6315	1865 - 3815 - 6315
	Stacking capacity, in container row 1-2-3-4 of 8'6" / 9'6"		mm	5/5 - 5/4 - 4/3	5/5 - 5/4 - 4/3
	Lost load centre, to front face of tyres	X	mm	835	935
WEIGHTS ¹	Wheelbase	L3	mm	6000	6000
	Service weight, standard truck		kg	73500	81800
	Axle load, front at load centre L4, unloaded - loaded	(no jacks)	kg	41000 - 107000	42000 - 108000
	Axle load, front at load centre L5, unloaded - loaded	(no jacks)	kg	46700 - 91100	48000 - 105400
	Axle load, rear at load centre L4, unloaded - loaded		kg	32500 - 11500	39800 - 18800
	Axle load, rear at load centre L5, unloaded - loaded		kg	26800 - 7400	33800 - 8400
REACHSTACKER DIMENSIONS	Boom angle, min - max		deg	0 - 60	0 - 60
	Boom height, min - max	H3 - H5	mm	4600 - 18200	4600 - 18500
	Chassis height - top of boom fixation, max	H2	mm	3925	4050
	Lift height, max	H4	mm	14900	15000
	Boom reach stroke		mm	7000	7000
	Truck height - seat height	H6 - H8	mm	4600 - 2575	4600 - 2675
	Overall truck length with boom	L	mm	11200	11200
	Truck width over drive axle	B	mm	4150	4150
	Spreader sideshift	V1	mm	=+/-800 (1600)	=+/-800 (1600)
	Spreader rotation		deg	=+195/-105	=+195/-105
	Ground clearance	min	mm	250	300
	Aisle width with 20'-40' container	A1 - A2	mm	11200 - 13600	11200 - 13600
	Turning radius, outer with 20'-40' container (at 90 degree turn)	R1 - R3	mm	8000 - 9400	8100 - 9400
	Turning radius, outer (at 90 degree turn)	R1	mm	-	-
WHEELS	Wheels	Number of wheels, front – rear (x = driven)		4* – 2	
	Tyres	Pneumatics, type / pressure (front - rear)	MPa	Diagonal / 1.0	
		Dimensions, front – rear	tum	18.00×25"	18.00×33"
	Rims	Dimensions, front – rear		13.00x25"/2.5	13.00x33"/2.5
		Track width (front - rear)	S1 - S2	3030 - 2800	
AXLES	Steer axle	Manufacturer, type - designation		Kalmar steer axle / hydraulic power steering / double acting single cylinder	
	Drive axle	Manufacturer, type - designation		Kessler D111-P447/PL545 / drive axle with differential and hub reduction	
	Service brakes	Type – affected wheels		Oil cooled wet disc brakes (WDB) / drive wheels	
	Parking brake	Type – affected wheels		Single dry disc / spring activated - hydraulic release / drive wheels	
HYDRAULICS	Hydraulics	System type / pump type		Load-sensing function / power-on-demand / variable piston pumps	
	Oil pressure	Max working pressure boom / spreader	MPa	23 / 16	
	Tank	Oil volume	Lit	740 (600 + 140)	
		Fuel tank, capacity	Lit	550	
		AdBlue tank, capacity	Lit	35	

DRG450-65C5	DRG450-65C5X	DRG450-65C5XS	DRG450-70C5X	DRG450-70C5XS	DRG450-75C5XS	DRG450-82C5X	DRG450-82C5XS
WB 6 - 6.5 m - Intermodal			WB 7 - 9.25 m - Intermodal				
45 - 28 - 13	45 - 34 - 17	45 - 34 - 17	45 - 38 - 20	45 - 38 - 20	45 - 43 - 24	45 - 45 - 34 - 21	45 - 45 - 34 - 21
-	-	45 - 38 - 24	-	45 - 38 - 27	45 - 45 - 32	-	45 - 45 - 45 - 29
1965 - 3815 - 6315	1865 - 3815 - 6315		1865 - 3815 - 6315			2765 - 3915 - 6415 - 8915	
5/5 - 5/4 - 4/3	5/5 - 5/4 - 4/3	5/5 - 5/4 - 4/3	5/5 - 5/4 - 4/3	5/5 - 5/4 - 4/3	5/5 - 5/4 - 4/3	5/5 - 5/5 - 5/5 - 4/4	5/5 - 5/5 - 5/5 - 4/4
835	935	935	935	935	935	1035	1035
6500	6500	6500	7000	7000	7500	8250	8250
74100	81300	83500	83300	84800	88400	111000	111000
41600 - 106000	42400 - 106800	44500 - 108900	43500 - 106500	45000 - 108000	46000 - 107800	60000 - 125700	60000 - 125700
46900 - 94900	48000 - 106800	50200 - 109000	48800 - 112600	50300 - 114100	51000 - 121200	63000 - 135000	63000 - 135000
32500 - 13100	38900 - 19500	39000 - 19600	39800 - 21800	39800 - 21800	42400 - 25600	51000 - 30300	51000 - 30300
27200 - 7200	33300 - 8500	33300 - 8500	34500 - 8700	34500 - 8700	37400 - 10200	48000 - 21000	48000 - 21000
0 - 60	0 - 60	0 - 60	0 - 60	0 - 60	0 - 58	0 - 47	0 - 47
4600 - 18200	4700 - 18300	4700 - 18300	4700 - 18300	4700 - 18300	4750 - 18400	5250 - 19400	5250 - 19400
3925	3925	3925	4050	4050	4050	4300	4300
14900	15000	14900	14900	14900	15000	15600	15600
7000	7000	7000	7000	7000	7000	8500	8500
4600 - 2575	4700 - 2675	4700 - 2675	4700 - 2675	4700 - 2675	4750 - 2700	5250 - 2950	5250 - 2950
11700	11700	11700	12300	12200	12800	14700	14700
4150	4150	4150	4150	4150	4150	4600	4600
=+/-800 (1600)	=+/-800 (1600)	=+/-800 (1600)	=+/-800 (1600)	=+/-800 (1600)	=+/-800 (1600)	=+/-800 (1600)	=+/-800 (1600)
=+195/-105	=+195/-105	=+195/-105	=+195/-105	=+195/-105	=+195/-105	=+195/-105	=+195/-105
250	300	300	300	300	300	300	300
11600 - 13600	11600 - 13600	11600 - 13600	12250 - 13600	12100 - 13600	12650 - 13600	15900 - 16700	15900 - 16700
8500 - 9400	8500 - 9400	8500 - 9400	9150 - 9400	9000 - 9400	9550 - 9500	11300 - 12100	11300 - 12100
-	-	-					
4* – 2			4* – 2				
Diagonal / 1.0			Diagonal / 1.0			Diagonal / 1.0	
18.00×25"	18.00×33"	18.00×33"	18.00×33"			21.00×35"	
13.00x25"/2.5	13.00x33"/2.5	13.00x33"/2.5	13.00x33"/2.5			15.00x35"/3.0	
3030 - 2800			3030 - 2800			3230 - 3300	
Kalmar steer axle / hydraulic power steering / double acting single cylinder			Kalmar steer axle / hydraulic power steering / double acting single cylinder			Kalmar steer axle / hydraulic power steering / double acting single cylinder	
Kessler D111-P447/PL545 / drive axle with differential and hub reduction			Kessler D102-PL341 / drive axle with differential and hub reduction			Kessler D111-P447/PL545 / drive axle with differential and hub reduction	
Oil cooled wet disc brakes (WDB) / drive wheels			Oil cooled wet disc brakes (WDB) / drive wheels			Oil cooled wet disc brakes (WDB) / drive wheels	
Single dry disc / spring activated - hydraulic release / drive wheels			Single dry disc / spring activated - hydraulic release / drive wheels			Single dry disc / spring activated - hydraulic release / drive wheels	
Load-sensing function / power-on-demand / variable piston pumps			Load-sensing function / power-on-demand / variable piston pumps			Load-sensing function / power-on-demand / variable piston pumps	
23 / 16			23 / 16			23 / 16	
740 (600 + 140)			740 (600 + 140)			840 (700 + 140)	
550			550			580	
35			35			35	

1. Weights and axle loadings are preliminary and are subject to change:
 DRG450-92C5X, DRG450-82C5X, DRG850-82A4X ,
 DRG850-82A4XS, DRG1000-82ZXs DRG1300-92ZXs

2. 360 / 360 (endless) for lifting hook

3. Lift eyes
 DRG850-82A4X 100 - 87 - 68 - 55 - 46 (no jacks)
 DRG850-82A4XS 100 - 100 - 80 - 72 - 60 (with jacks)
 DRG850-92A4X 100 - 92 - 75 - 53 - 39 (no jacks)
 DRG850-92A4XS 100 - 100 - 89 - 68 - 50 (with jacks)

Specifications¹

				DRG450-92C5X	DRG450-92C5XS
LIFT MODEL CAPACITY	Type of handling			WB 7 - 9.25 m - Intermodal	
	Lift capacity, row 1-2-3-4	Q1 - Q2 - Q3- Q4	tons	45 - 45 - 38 - 25	45 - 45 - 38 - 25
	Lift capacity, row 1-2-3-4 (with jacks)	Q1 - Q2 - Q3- Q4	tons	-	45 - 45 - 45 - 33
	Load centre, from front face of tyres, row 1-2-3-4	L4 - L5 - L6 - L7	mm	2765 - 3915 - 6415 - 8915	
	Stacking capacity, in container row 1-2-3-4 of 8'6" / 9'6"		mm	5/5 - 5/5 - 5/5 - 4/4	5/5 - 5/5 - 5/5 - 4/4
	Lost load centre, to front face of tyres	X	mm	1035	1035
WEIGHTS ¹	Wheelbase	L3	mm	9250	9250
	Service weight, standard truck		kg	111000	111000
	Axle load, front at load centre L4, unloaded - loaded	(no jacks)	kg	60000 - 123500	60000 - 123500
	Axle load, front at load centre L5, unloaded - loaded	(no jacks)	kg	62700 - 131700	62700 - 131700
	Axle load, rear at load centre L4, unloaded - loaded		kg	51000 - 32500	51000 - 32500
	Axle load, rear at load centre L5, unloaded - loaded		kg	48000 - 24300	48000 - 24300
REACHSTACKER DIMENSIONS	Boom angle, min - max		deg	0 - 47	0 - 47
	Boom height, min - max		mm	5250 - 19400	5250 - 19400
	Chassis height - top of boom fixation, max		mm	4300	4300
	Lift height, max		mm	15600	15600
	Boom reach stroke		mm	8500	8500
	Truck height - seat height		mm	5250 - 3000	5250 - 3000
	Overall truck length with boom		mm	15700	15700
	Truck width over drive axle		mm	4600	4600
	Spreader sideshift		mm	=+/-800 (1600)	=+/-800 (1600)
	Spreader rotation		deg	=+195/-105	=+195/-105
	Ground clearance		mm	300	300
	Aisle width with 20'-40' container		mm	17000 - 17200	17000 - 17200
	Turning radius, outer with 20'-40' container (at 90 degree turn)		mm	12450 - 12650	12450 - 12650
	Turning radius, outer (at 90 degree turn)		mm	-	-
WHEELS	Wheels	Number of wheels, front – rear (x = driven)		4* – 2	
	Tyres	Pneumatics, type / pressure (front - rear)		MPa Diagonal / 1.0	
		Dimensions, front – rear		tum 21.00×35"	
	Rims	Dimensions, front – rear		15.00x35"/3.0	
	Track width (front - rear)		mm	S1 - S2 3250 - 3300	
AXLES	Steer axle	Manufacturer, type - designation		Kalmar steer axle / hydraulic power steering / double acting single cylinder	
	Drive axle	Manufacturer, type - designation		Kessler D111-P447/PL545 / drive axle with differential and hub reduction	
	Service brakes	Type – affected wheels		Oil cooled wet disc brakes (WDB) / drive wheels	
	Parking brake	Type – affected wheels		Single dry disc / spring activated - hydraulic release / drive wheels	
HYDRAULICS	Hydraulics			Load-sensing function / power-on-demand / variable piston pumps	
	Oil pressure	Max working pressure boom / spreader		MPa	23 / 16
	Tank	Oil volume		Lit	840 (700 + 140)
		Fuel tank, capacity		Lit	580
		AdBlue tank, capacity		Lit	35

DRG540-60A5X	DRG540-65A5X	DRG540-65A5XS	DRG650-82A5XS	DRG650-92A5XS	DRG850-82A4X	DRG850-82A4XS
WB 6 - 6.5m - Industrial handling, tool carrier			WB 8.25 - 9.25m - Industrial handling, tool carrier			
54 - 33 - 20 - 14	54 - 38 - 25 - 17	54 - 38 - 25 - 17	65 - 65 - 47 - 34 - 28	65 - 65 - 47 - 34 - 26	85 - 85 - 68 - 46 - 34	85 - 85 - 68 - 46 - 34
-	-	54 -44 - 33 - 23	65 - 65 - 60 - 45 - 34	65 - 65 - 60 - 45 - 34	-	85 - 85 - 80 - 72 - 45
2000 - 4000 - 6000 - 8000 - 10000			2000 - 4000 - 6000 - 8000 - 10000			
-	-	-	-	-	-	-
935	935	935	1035	1035	1035	1035
6000	6500	6500	9250	9250	8250	8250
74000	74000	75500	100500	100500	112400	112400
31000 - 110200	31000 - 109600	32500 - 111000	47400 - 133700	47400 - 133700	49300 - 166300	49300 - 166300
-	-	-	-	-	-	-
43000 - 17800	43000 -18400	43000 - 18400	53100 - 31800	53100 - 31800	63100 - 31100	63100 - 31100
-	-	-	-	-	-	-
0 - 60	0 - 60	0 - 60	0 - 47	0 - 47	0 - 42	0 - 42
4700 - 18300	4700 - 18300	4700 - 18300	5250 - 19400	5250 - 19400	5250 - 16400	5250 - 16400
4050	4025	4025	4300	4300	4300	4300
15250	15300	15300	15950	15950	13000	13000
7000	7000	7000	8500	8500	7000	7000
4700 - 2675	4700 - 2680	4700 - 2680	2675	5250 - 3000	5250 - 3100	5250 - 3100
10800	11400	11400	15300	15300	12800	12800
4150	4100	4150	4600	4600	4800	4800
=+/-450	=+/-450	=+/-450	=+/-450	=+/-450	=+/-450	=+/-450
=+195/-105	=+195/-105	=+195/-105	=+195/-105	=+195/-105	=+195/-105	=+195/-105
300	300	300	300	300	300	300
-	-	-	-	-	-	-
-	-	-	-	-	-	-
8100	8650	8650	12450	12450	11400	11400
4* – 2			4* – 2	4* – 2	4* – 2	4* – 2
Diagonal / 1.0			Diagonal / 1.0	Diagonal / 1.0	Tubeless - Diagonal - E4 / 1.0	Tubeless - Diagonal - E4 / 1.0
18.00×33"	18.00×33"	18.00×33"	21.00×35"	21.00×35"	24.00x35"	24.00x35"
13.00x33"/2.5	13.00x33"/2.5	13.00x33"/2.5	15.00x35"/3.0	15.00x35"/3.0	17.00x35"/3.5	17.00x35"/3.5
3030 - 2800	3030 - 2800	3030 - 2800	-	3245 - 3300	3300 - 3300	3300 - 3300
Kalmar steer axle / hydraulic power steering / double acting single cylinder			Kalmar steer axle / hydraulic power steering / double acting single cylinder			
Kessler D102-PL341 / drive axle with differential and hub reduction			Kessler D111-P447/PL545 / drive axle with differential and hub reduction			
Oil cooled wet disc brakes (WDB) / drive wheels			Oil cooled wet disc brakes (WDB) / drive wheels			
Single dry disc / spring activated - hydraulic release / drive wheels			Single dry disc / spring activated - hydraulic release / drive wheels			
Load-sensing function / power-on-demand / variable piston pumps			Load-sensing function / power-on-demand / variable piston pumps			
23 / 16			23 / 16		23 / 16	
740 (600 + 140)			840 (700 + 140)		840 (700 + 140)	
550			580		580	
35			35		35	

1. Weights and axle loadings are preliminary and are subject to change:
DRG450-92C5X, DRG450-82C5X, DRG850-82A4X ,
DRG850-82A4XS, DRG1000-82ZXs DRG1300-92ZXs

3. Lift eyes
DRG850-82A4X 100 - 87 - 68 - 55 - 46 (no jacks)
DRG850-82A4XS 100 - 100 - 80 - 72 - 60 (with jacks)
DRG850-92A4X 100 - 92 - 75 - 53 - 39 (no jacks)
DRG850-92A4XS 100 - 100 - 89 - 68 - 50 (with jacks)

2. 360 / 360 (endless) for lifting hook

Specifications¹

LIFT MODEL CAPACITY				DRG850-92A4X	DRG850-92A4XS
	Type of handling			WB 8.25 - 9.25m - Industrial handling, tool carrier	
	Lift capacity, row 1-2-3-4	Q1 - Q2 - Q3- Q4	tons	85 - 85 - 75 - 53- 39	85 - 85 - 75 - 53- 39
	Lift capacity, row 1-2-3-4 (with jacks)	Q1 - Q2 - Q3- Q4	tons	–	85 - 85 - 85 - 68 - 50
	Load centre, from front face of tyres, row 1-2-3-4	L4 - L5 - L6 - L7	mm	2000 - 4000 - 6000 - 8000 - 10000	
	Stacking capacity, in container row 1-2-3-4 of 8'6" / 9'6"		mm	-	-
	Lost load centre, to front face of tyres	X	mm	1035	1035
WEIGHTS ¹	Wheelbase	L3	mm	9250	9250
	Service weight, standard truck		kg	113000	114300
	Axle load, front at load centre L4, unloaded - loaded	(no jacks)	kg	49400 - 162900	50600 - 164100
	Axle load, front at load centre L5, unloaded - loaded	(no jacks)	kg	-	-
	Axle load, rear at load centre L4, unloaded - loaded		kg	63600 - 35100	63700 - 35200
REACHSTACKER DIMENSIONS	Axle load, rear at load centre L5, unloaded - loaded		kg	-	-
	Boom angle, min - max		deg	0 - 42	0 - 42
	Boom height, min - max	H3 - H5	mm	5250 - 16400	5250 - 16400
	Chassis height - top of boom fixation, max	H2	mm	4300	4300
	Lift height, max	H4	mm	13000	13000
	Boom reach stroke		mm	7000	7000
	Truck height - seat height	H6 - H8	mm	5250 - 3100	5250 - 3100
	Overall truck length with boom	L	mm	13800	13800
	Truck width over drive axle	B	mm	4900	4900
	Spreader sideshift	V1	mm	=+/-450	=+/-450
	Spreader rotation		deg	=+195/-105	=+195/-105
	Ground clearance	min	mm	400	400
	Aisle width with 20'-40' container	A1 - A2	mm	-	-
	Turning radius, outer with 20'-40' container (at 90 degree turn)	R1 - R3	mm	-	-
WHEELS	Turning radius, outer (at 90 degree turn)	R1	mm	12450	12450
	Wheels	Number of wheels, front – rear (x = driven)		4* – 2	
	Tyres	Pneumatics, type / pressure (front - rear)	MPa	Tubeless - Diagonal - E4 / 1.0	
		Dimensions, front – rear	tum	24.00x35"	
	Rims	Dimensions, front – rear		17.00x35"/3.5	
AXLES	Track width (front - rear)	S1 - S2	mm	3300 - 3300	
	Steer axle	Manufacturer, type - designation		Kalmar steer axle / hydraulic power steering / double acting single cylinder	
	Drive axle	Manufacturer, type - designation		Kessler D111-P447/PL545 / drive axle with differential and hub reduction	
	Service brakes	Type – affected wheels		Oil cooled wet disc brakes (WDB) / drive wheels	
HYDRAULICS	Parking brake	Type – affected wheels		Single dry disc / spring activated - hydraulic release / drive wheels	
	Hydraulics	System type / pump type		Load-sensing function / power-on-demand / variable piston pumps	
	Oil pressure	Max working pressure boom / spreader	MPa	23 / 16	
	Tank	Oil volume	Lit	840 (700 + 140)	
		Fuel tank, capacity	Lit	580	
		AdBlue tank, capacity	Lit	35	

DRG570-65Z	DRG600-65ZX	DRG600-65ZXS	DRG700-75ZX	DRG700-75ZXS
WB 6.5 - 7.5m - Lift hook				
57-54-31-19-14	60-60-38- 25-18	60-60-38- 25-18	70-60-45-30-22	70-60-45-30-22
-	-	60-60-45-34-24	-	70-60-45-39 -28
1500 - 2000 - 4000 - 6000 - 8000				
-	-	-	-	-
835	935	935	935	935
6500	6500	6500	7500	7500
61100	70900	72100	74000	75000
26000 - 103500	27300 - 114600	28300 - 115600	30600-123300	31600-124300
-	-	-	-	-
35100 - 14600	43600 - 16300	43600 - 16300	43400-20700	43400-20700
-	-	-	-	-
0 - 60	0 - 60	0 - 60	0 - 58	0 - 58
4600 - 18200	4700 - 18300	4700 - 18300	4750 - 18400	4750 - 18400
3925	4050	4050	4050	4050
15200	15200	15200	15300	15300
7000	7000	7000	7000	7000
4600 - 2575	4700 - 2675	4700 - 2675	4750 - 2675	4750 - 2675
10900	10900	10900	11900	11900
4150	4150	4150	4150	4150
-	-	-	-	-
360 / 360 (endless)*	360 / 360 (endless)*	360 / 360 (endless)*	360 / 360 (endless)*	360 / 360 (endless)*
250	300	300	300	300
-	-	-	-	-
-	-	-	-	-
9400	12450	12450	9400	9400
4* – 2	4* – 2	4* – 2	4* – 2	4* – 2
Diagonal / 1.0	Diagonal / 1.0	Diagonal / 1.0	Diagonal / 1.0	Diagonal / 1.0
18.00×25"	18.00×33"	18.00×33"	18.00×33"	18.00×33"
13.00x25"/2.5	13.00x33"/2.5	13.00x33"/2.5	13.00x33"/2.5	13.00x33"/2.5
3030 - 2600	3030 - 2800	3030 - 2800	3030 - 2800	3030 - 2800
Kalmar steer axle / hydraulic power steering / double acting single cylinder				
Kessler D111-P447/PL545 / drive axle with differential and hub reduction				
Oil cooled wet disc brakes (WDB) / drive wheels				
Single dry disc / spring activated - hydraulic release / drive wheels				
Load-sensing function / power-on-demand / variable piston pumps				
23 / 16				
740 (600 + 140)				
550				
35				

1. Weights and axle loadings are preliminary and are subject to change:
DRG450-92C5X, DRG450-82C5X, DRG850-82A4X ,
DRG850-82A4XS, DRG1000-82ZXS DRG1300-92ZXS

2. 360 / 360 (endless) for lifting hook

3. Lift eyes
DRG850-82A4X 100 - 87 - 68 - 55 - 46 (no jacks)
DRG850-82A4XS 100 - 100 - 80 - 72 - 60 (with jacks)
DRG850-92A4X 100 - 92 - 75 - 53 - 39 (no jacks)
DRG850-92A4XS 100 - 100 - 89 - 68 - 50 (with jacks)

Specifications¹

				DRG1000-82ZX	DRG1000-82ZXS
LIFT MODEL CAPACITY	Type of handling			WB 8.25 - 9.25m - Lift hook	
	Lift capacity, row 1-2-3-4	Q1 - Q2 - Q3- Q4	tons	100 - 100 - 70 - 48 - 36	100 - 100 - 70 - 48 - 36
	Lift capacity, row 1-2-3-4 (with jacks)	Q1 - Q2 - Q3- Q4	tons	-	100 - 100 - 83 - 63 - 48
	Load centre, from front face of tyres, row 1-2-3-4	L4 - L5 - L6 - L7	mm	1000 - 2000 - 4000 - 6000 - 8000	
	Stacking capacity, in container row 1-2-3-4 of 8'6" / 9'6"		mm	-	-
	Lost load centre, to front face of tyres	X	mm	1100	1100
WEIGHTS ¹	Wheelbase	L3	mm	8250	8250
	Service weight, standard truck		kg	110000	110000
	Axle load, front at load centre L4, unloaded - loaded	(no jacks)	kg	46200 - 183800	46200 - 183800
	Axle load, front at load centre L5, unloaded - loaded	(no jacks)	kg	-	-
	Axle load, rear at load centre L4, unloaded - loaded		kg	63800 - 26200	63800 - 26200
	Axle load, rear at load centre L5, unloaded - loaded		kg	-	-
REACHSTACKER DIMENSIONS	Boom angle, min - max		deg	0 - 42	0 - 42
	Boom height, min - max	H3 - H5	mm	5640 - 16500	5640 - 16500
	Chassis height - top of boom fixation, max	H2	mm	4400	4400
	Lift height, max	H4	mm	13000	13000
	Boom reach stroke		mm	7000	7000
	Truck height - seat height	H6 - H8	mm	5640 - 3100	5640 - 3100
	Overall truck length with boom	L	mm	12500	12500
	Truck width over drive axle	B	mm	4850	4850
	Spreader sideshift	V1	mm	-	-
	Spreader rotation		deg	360 / 360 (endless)*	360 / 360 (endless)*
	Ground clearance	min	mm	300	300
	Aisle width with 20'-40' container	A1 - A2	mm	-	-
	Turning radius, outer with 20'-40' container (at 90 degree turn)	R1 - R3	mm	-	-
	Turning radius, outer (at 90 degree turn)	R1	mm	11400 - 2900	11400 - 2900
WHEELS	Wheels	Number of wheels, front – rear (x = driven)		4* - 2	
	Tyres	Pneumatics, type / pressure (front - rear)	MPa	Tubeless - Diagonal - E4 / 1.0	
		Dimensions, front – rear	tum	24.00x35"	
	Rims	Dimensions, front – rear		17.00x35"/3.5	
		Track width (front - rear)	mm	3384 - 3300	
AXLES	Steer axle	Manufacturer, type - designation		Kalmar steer axle / hydraulic power steering / double acting single cylinder	
	Drive axle	Manufacturer, type - designation		Kessler D111-P447/PL545 / drive axle with differential and hub reduction	
	Service brakes	Type – affected wheels		Oil cooled wet disc brakes (WDB) / drive wheels	
	Parking brake	Type – affected wheels		Single dry disc / spring activated - hydraulic release / drive wheels	
HYDRAULICS	Hydraulics	System type / pump type		Load-sensing function / power-on-demand / variable piston pumps	
	Oil pressure	Max working pressure boom / spreader	MPa	23 / 16	
	Tank	Oil volume	Lit	840 (700 + 140)	
		Fuel tank, capacity	Lit	580	
		AdBlue tank, capacity	Lit	35	

DRG1300-92ZX	DRG1300-92ZXS
WB 8.25 - 9.25m - Lift hook	
130 - 125 - 85 - 58 - 43	130 - 125 - 85 - 58 - 43
-	130 - 130 - 90 - 68 - 51
1300 - 1700 - 4000 - 6000 - 8000	
-	-
1100	1100
9250	9250
113000	113000
46300 - 210100	46300 - 210100
-	-
66700 - 32900	66700 - 32900
-	-
0 - 42	0 - 42
5640 - 16500	5640 - 16500
4400	4400
13000	13000
7000	7000
5640 - 3100	5640 - 3100
14150	14150
4900	4900
-	-
-	-
360 / 360 (endless)*	360 / 360 (endless)*
400	400
-	-
-	-
12500 - 3500	12500 - 3500
4* - 2	
Tubeless - Diagonal - E4 / 1.0	
24.00x35"	
17.00x35"/3.5	
3384 - 3300	
Kalmar steer axle / hydraulic power steering / double acting single cylinder	
Kessler D111-P447/PL545 / drive axle with differential and hub reduction	
Oil cooled wet disc brakes (WDB) / drive wheels	
Single dry disc / spring activated - hydraulic release / drive wheels	
Load-sensing function / power-on-demand / variable piston pumps	
23 / 16	
840 (700 + 140)	
580	
35	



Barge handler



CombiLift



Lift Hook



Tool Carrier

1. Weights and axle loadings are preliminary and are subject to change:
DRG450-92C5X, DRG450-82C5X, DRG850-82A4X, DRG850-82A4XS, DRG1000-82ZXS DRG1300-92ZXS

3. Lift eyes
DRG850-82A4X 100 - 87 - 68 - 55 - 46 (no jacks)
DRG850-82A4XS 100 - 100 - 80 - 72 - 60 (with jacks)
DRG850-92A4X 100 - 92 - 75 - 53 - 39 (no jacks)
DRG850-92A4XS 100 - 100 - 89 - 68 - 50 (with jacks)

2. 360 / 360 (endless) for lifting hook

Drivetrain

MODELS	Models		Cummins	Volvo	Volvo	Volvo	Volvo
	Wheelbase	mm	6000 - 7500	6000 - 7500	6000 - 9250	6000 - 7500	6000 - 9250
ENGINES	Drive motor, manufacturer - type designation		QSM-11-C330	TAD-1151-VE	TAD-1152-VE	TAD-1181-VE	TAD-1182-VE
	Fuel types, motor type ¹		Diesel / HVO / 4-stroke	Diesel / HVO / 4-stroke	Diesel / HVO / 4-stroke	Diesel / HVO / 4-stroke	Diesel / HVO / 4-stroke
	Turbo charger / cooling		Turbo (FGT) + Intercooler	Turbo (FGT) + Intercooler	Turbo (FGT) + Intercooler	Turbo (FGT) + Intercooler	Turbo (FGT) + Intercooler
	Engine after treatment type		No AdBlue, DOC, SCR or DPF	No AdBlue, DOC, SCR or DPF	No AdBlue, DOC, SCR or DPF	With AdBlue, DOC and ASC	With AdBlue, DOC and ASC
	Diesel particle filter (DPF)		No DPF	No DPF	No DPF	With DPF	With DPF
	Emission standards		EU stage IIIA / EPA Tier 3	EU stage IIIA / EPA Tier 3	EU stage IIIA / EPA Tier 3	EU stage V / EPA Tier 4-Final	EU stage V / EPA Tier 4-Final
	Rated power / at revs (ISO 3046)	kW / rpm	246 / 2100	265 / 2100	285 / 2100	265 / 2100	285 / 2100
	Peak power / at revs (ISO 3046)	kW / rpm	248 / 1800 - 2100	265 / 1450 - 2100	285 / 1500 - 1900	265 / 1500 - 2100	285 / 1500 - 1900
	Peak torque / at revs (ISO 3046)	Nm / rpm	1674 / 1400	1785 / 1260	1900 / 1100 - 1450	1785 / 1300	1900 / 1100 - 1450
	Number of cylinders / displacement	lit (in2)	6 / 10.800 (660)	6 / 10.840 (661)	6 / 10.840 (661)	6 / 10.840 (661)	6 / 10.840 (661)
TRANSMISSION	Fuel consumption, normal driving	lit/h	14 - 20	14 - 20	14 - 20	14 - 20	14 - 20
	AdBlue consumption, normal driving ²	%	-	-	-	4 - 6	4 - 6
	Manufacturer's type designation		Dana TE-30510	Dana TE-30500	Dana TE-30500	Dana TE-30500	Dana TE-30500
	Clutch, type		Torque converter	Torque converter	Torque converter	Torque converter	Torque converter
	Transmission, type		Hydrodynamic Powershift	Hydrodynamic Powershift	Hydrodynamic Powershift	Hydrodynamic Powershift	Hydrodynamic Powershift
	Eco Drive Mode (EDM) drivetrain settings ³		3 modes / Eco, Normal & Power	3 modes / Eco, Normal & Power	3 modes / Eco, Normal & Power	3 modes / Eco, Normal & Power	3 modes / Eco, Normal & Power
	Numbers of gears, forward / reverse	gears	5 / 3	5 / 3	5 / 3	5 / 3	5 / 3
	Alternator, type / power	W	AC / 4200 (28V x 150A)	AC / 4200 (28V x 150A)	AC / 4200 (28V x 150A)	AC / 4200 (28V x 150A)	AC / 4200 (28V x 150A)
	Starting battery, voltage / capacity		V / Ah	2×12 / 145	2×12 / 145	2×12 / 145	2×12 / 145

- Notes:
- 1. Regular diesel based on EN590 (ASTM D975 no. 2-D) Synthetic / paraffinic diesel based on EN 15940.
 - 2. AdBlue / Diesel Exhaust fluid (DEF) doser unit Diesel Oxidation Catalyst (DOC) Diesel Particulate Filter (DPF) Selective Catalyst Reduction (SCR) Ammonia Slip Catalyst (ASR)
 - 3. With Eco Drive Mode (EDM) drivetrain settings included. Eco, Normal and Power (various rpms)



Tilt Spreader 45°



Top Lifter



Magnet for thick slabs



Pipe Handler



Gripper

Performance

MODELS	Models			Container and Intermodal handling		Tool Carrier Handling		Lift Hook Handling	
	Wheelbase			6000 - 7500	8250 - 9250	6000 - 7500	8250 - 9250	6000 - 7500	8250 - 9250
SPEEDS	Travel speed, forward - reverse	Unloaded / at rated load	km/h	28 - 22 / 18 - 16	22 - 20 / 15 - 14	28 - 22 / 18 - 16	22 - 15 / 5- 5	28 - 5 / 18 - 5	28 - 2 / 17 - 2
	Lifting speed	Unloaded / at 70 % of rated load	m/s	0.42 / 0.25	0.43 / 0.20	0.42 / 0.25	0.43 / 0.20	0.42 / 0.25	0.33 / 0.20
	Lowering speed	Unloaded / At rated load	m/s	0.36 / 0.36	0.33/ 0.33	0.36 / 0.36	0.33/ 0.33	0.36 / 0.36	0.46 / 0.33
POWER	Gradeability, max	Unloaded	%	50	41	50	44	50	37
		At rated load	%	27	27	27	25	27	15
	Gradeability, at 2 km/h	Unloaded	%	38	22	38	24	38	20
		At rated load	%	21	15	21	14	21	8
	Drawbar pull		kN	321	435	321	435	321	410
SOUND	Noise level, inside EGO cabin ²	EN12053, LpAZ	dB(A)	66 - 70	65 - 67	66 - 70	65 - 67	66 - 70	65 - 67
	Noise level, outside ²	EN12053, LWAZ	dB(A)	105 - 108	104 - 107	106 - 108	104 - 107	106 - 108	104 - 107
	Noise level, outside ²	2000/14/EC, LWAZ	dB(A)	107 - 110	107 - 110	107 - 110	107 - 110	107 - 110	107 - 110

- Notes:
- 1. With Eco Drive Mode (EDM) drivetrain settings included.
 - 2. Eco, Normal and Power (various rpms)



Kalmar

www.kalmarglobal.com

Published by Kalmar, Copyright © Kalmar Corporation 2025.
All rights reserved.

